

Prospectus

2022-23

Open Basic Education Programme
Adolescent and Adults (Above 14 years age group)



National Institute of Open Schooling

ISO 9001 : 2015 Certified

(An autonomous Institution under Ministry of Education, Govt. of India)

A-24-25, Sector-62, NOIDA-201309, Uttar Pradesh

Prospectus

2022-23

Open Basic Education Programme

Adolescent and Adults (Above 14 years age group)



National Institute of Open Schooling

ISO 9001 : 2015 Certified

(An autonomous Institution under Department of School Education & Literacy, Ministry of Education, Government of India)

A-24-25, Institutional Area, Sector-62, NOIDA-201309, Uttar Pradesh

Learner Support Centre Toll Free No.: 1800 180 9393, **E-mail:** lsc@nios.ac.in

"The Largest Open Schooling System in the World"

Chairperson's Message



Dear Learner,

The process of education has witnessed tremendous changes globally and is undergoing rapid transformation constantly. At elementary level such changes can be easily observed, where the process is equally important as outcomes. Education is now learner centric instead of what it has traditionally been i.e. teacher centric. The learner is expected to be more responsible for his/her choice of subjects and also process of education than before. Now a large number of adolescents as well as parents of children for 6 to 14 years of age group decide to pursue education not through the classroom teaching process but on their own, at their own pace and place. Learners, who wish to try something beyond curricular areas, like sports, music etc., or want to take greater academic challenge to excel in life, decide to pursue education through open and distance learning (ODL) mode, largely depending upon self-instructional material, both print and non-print. The ODL mode is also becoming more accessible for such learners who find difficulty in learning through formal schooling due to some kind of disability. The ODL mode provides more flexibility in access, learning and assessment as per the specific needs of the person with disability.

The National Institute of Open Schooling (NIOS) is one of the two National Boards of School Education. It offers school education through ODL mode. It is the largest Open School in the world with largest enrollment and number of courses available, supported by print and electronic material. NIOS has been vested with the authority to enroll, examine and certify learners up to pre-degree level. The Open Schooling courses of study of NIOS have the same standard and equivalence as the courses of study of other national/state level Boards of School Education. Learners have joined school education of other boards, colleges and professional institutions after completing their studies from NIOS. NIOS develops its own curriculum, self learning material and media support programmes utilizing expertise of faculty from various Academic and Vocational Education institutions/ organizations of repute.

I congratulate each one of you on your decision to pursue your education through the OBE Programme of NIOS. You are now a proud and privileged member of the NIOS community. I welcome all of you to NIOS.

There is generally a feeling that distance education is easy. The content load or the level of learning expected to take place has to be identical for all learners who acquire certificates either through a national or a State School Education Board or through NIOS. But in reality the learners of ODL mode are more active in learning process as they have to be more self disciplined to go through the self-instructional material and also hear and/or watch the recorded lectures. You are up for a more challenging task than your counterparts in the traditional schooling system. I sincerely salute you on your decision to take this opportunity.

As you all know, of late NIOS has shifted to 100 % On-line admissions for OBE Programme through its website www.nios.ac.in. Moving a step further in the direction of digitalization and making the admission process more learner friendly, NIOS from this year has also introduced admission through Mobile App. named as "NIOS SMIS" (Student Management Information System). The complete life cycle of NIOS learner right from taking admission to final certification shall be available on the mobile App. Each activity of NIOS shall be intimated to the learner through this mobile App. Please note carefully that under the scheme of on-line admission, payment of processing charges for admission will be on-line only. No cheque/Bank Draft etc., will be accepted in so far as payment is concerned. The processing charges don't include the Self Learning Material. The Chapter 2 will give you detailed description about admission process.

The OBE programme is unique in nature and being implemented in collaboration with Accredited Agencies (AAs). These AAs are schools, NGOs, Trusts or societies working to provide learning support to its learners. The OBE Programme gives flexibility to AAs in taking decision to choose learning material. They are free to adopt/adapt exemplar Self Learning Material developed by NIOS or they may also use the textbooks of NCERT or other State education boards. They may also develop their own learning material on the basis of Curriculum prescribed by NIOS. Therefore, you are advised to contact your allocated AA (Study Centre) for more information about Self Learning Material. The AA shall also inform you about the Counselling Schedules popularly known as Personal Contact Programme (PCP). Please read carefully the chapter 3 of the prospectus for knowing in detail the Instructional Process at NIOS. Attending PCP classes give you opportunity to interact with your Tutors for solving your difficulties related to subjects that you have chosen.

If you don't hear from your Study Centre, then you would yourself call them or go to the allotted AA and find out about the counselling sessions. During counselling, you will get opportunity to clarify your doubts about any of the topics in your study material. You will keep receiving SMS alerts at each step. You can also reach us through our toll free telephone number 1800-180-9393 and e-mail: lsc@nios.ac.in. In case, you wish to share something with me then you can write to me on my email id cm@nios.ac.in

Welcome once again to the NIOS fraternity.

Saroj Sharma

(Prof. Saroj Sharma)
Chairperson, NIOS

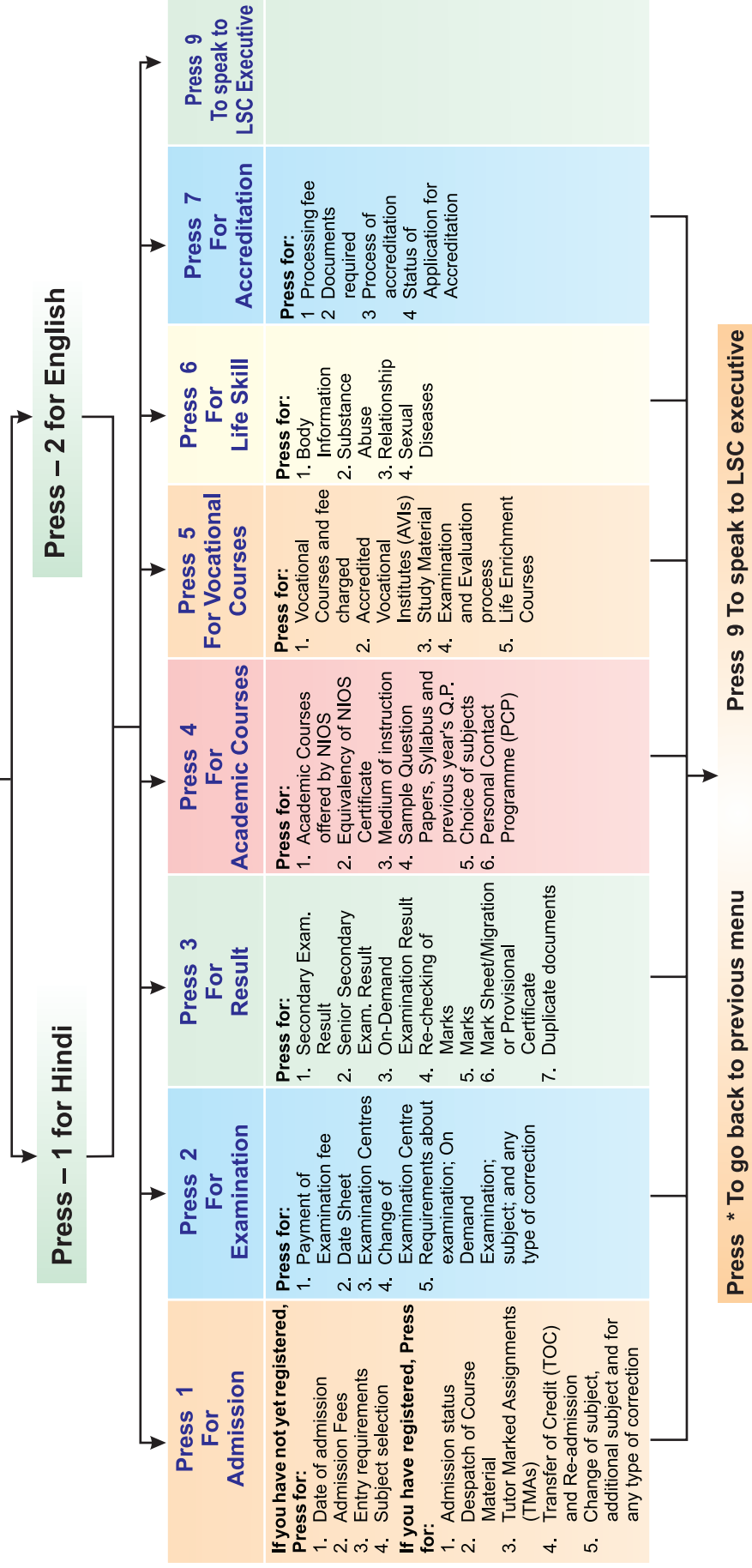
National Institute of Open Schooling (NIOS)

Learner Support Centre (LSC)

NIOS believes and hopes that learners do not face any problem and do not have any grievance while taking admission and during their studies. In this context, NIOS has established the Learner Support Centre (LSC) to redress learners related various issues through email, Interactive Voice Response System (IVRS) and Toll Free No. A diagrammatic presentation of the framework of the Learner Support Services (LSC) of NIOS is given below.

Dial 1800 180 9393

Welcome Message



FAQs for OBE Programme Learner

1. OBE programme - General Information

Q. What is the OBE programme?

A. Open Basis Education programme is an equivalency programme, offering elementary education at three levels i.e. Level A (equivalent to class 3), Level B (equivalent to class 5) and Level C (equivalent to class 8). It is offering elementary education through open and distance learning (ODL).

Q. Where can I get prospectus of the OBE programme?

A. The prospectus available online on NIOS portal, at <https://www.nios.ac.in/student-information-section/prospectus.aspx>

Q. Is the OBE programme equivalent to formal schooling?

A. Yes.

Q. Is the OBE programme recognized by the Govt. of India?

A. Yes.

Q. Who is eligible to take admission in the OBE programme?

A. Out of school children, children with special need (CWSN), School dropout from formal schooling, Neo literates of National Literacy Mission and left out from *Sarva Shiksha Abhiyan* can take admission in OBE programme at any level.

Q. Who can apply for the OBE programme?

A. Anyone can apply for OBE programme in respective categories;

Learners up to the age of 14 years can apply in children (6-14 years age group) and learners who are above age 14 year can apply in adolescence and adults (above 14 year age group).

Q. Which levels are offered in the OBE programme?

A. NIOS offers OBE programme at three levels i.e. Level A (equivalent to class 3), Level B (equivalent to class 5) and Level C (equivalent to class 8).

Q. Is a certificate issue by NIOS recognised for higher education and government jobs?

A. Yes, certificates issued by NIOS are recognized for higher education, government jobs and for all other purposes.

Q. Is a learner eligible to take admission in formal school after completion of any level of OBE program?

A. Yes, a learner can take admission in formal school after completion of any level of OBE programme e.g. after completion of level A, he/she is eligible to take admission in class 4 in formal school.

Q. Is there any provision for learner with disabilities (Physical and mental)?

A. Yes, the services of an amanuensis, reader can be availed as per requirement of the subject concerned. The following categories of learner will be eligible for this facility:

- a) Learner with autism
- b) Cerebral palsy
- c) Intellectual Disability including mental retardation
- d) Blindness and low vision
- e) Hearing impairment
- f) Any other disability such as learner with specific learning Disabilities like Dyslexia, Dysgraphia, dyscalculia, dyspraxia and developmental aphasia

Q. Is there any specific provision for learner with blindness and hearing impairment?

A. Yes, learner with blindness and low vision will be provided alternate question wherever possible, allowed to use Braille typewriter and learner with hearing impairment may be allowed interpreter using sign language.

Q. Is there any specific provision for learner with Autism, Cerebral palsy?

A. Yes, computer with adopted hardware, adopted chair, table, and bed may be allowed. Provision may also be made for reading the question wherever necessary.

Q. What is the difference between an accredited agency and study center?

A. Both are the same.

2. Admission Process

Q. What is the time schedule for admission in OBE programme?

A. The admission is start from 1st April to 31st May every year.

Q. For how many years are admission/ registration valid?

A. Admission/ registration is valid for five years at each level.

Q. Can a student/learner take admission in NIOS directly at any level?

A. Yes, a learner can be directly registered through the online portal of NIOS at https://sdmis.nios.ac.in/modules/obe-registration/index?stream_code=5&block_code=51&is_special_category=5

Q. Is the link of OBE admission open all year?

A. No, link is open only from 1st April to 31st May every year.

Q. Are registration and admission different processes?

A. No, after successful completion of online registration process learner admission is confirmed.

Q. How can a learner register himself/herself in the OBE programme?

A. A learner can be directly registered through online portal. He/She can also take help from nearest Regional Centre, Accredited Agency and Common Resource Centre (CRC) for admission in the OBE programmed if required.

3. Age criteria

Q. What is the minimum and maximum age for admission in OBE (children) programme.

A: Minimum age for admission is 7 year and maximum age 14 years as on 31st March of the year of admission.

Q. What is the minimum and maximum age for admission in OBE (adult) programme?

A. Minimum age for admission is 14 years and no maximum age bar for taking admission in OBE (adult) programme.

Q. What is the minimum age required for level A, B and C admission for OBE (children) programme?

A. A child should have attained the age of at least 7 years for level A, 9 years for level B and 12 years for level C as on 31st March of the year of admission.

4. Education Qualification

Q. What is the minimum educational qualification for admission in OBE programme?

A. No minimum educational qualification is required at any level.

5. Processing Charges

Q. How can a learner submit the processing charges at any level?

A. A learner can submit processing charges online through NIOS website.

Q. What is the processing charge for a learner for level A, B and C?

A. The processing charge for a learner at level A is Rs 300, Level B is Rs 500 and level C is Rs 800.

Q. Is there any examination fee for a learner?

A. There is no examination fee for a learner.

6. Document Required for Admission

Q. What are the supporting documents required for admission in the OBE programme?

A. Following supporting documents are required;

1. Document for Date of Birth
2. Proof of residential address
3. Scanned copy of recent passport size photograph
4. Scanned copy of signature of learner
5. Disability certificate (in case of having any kind of disability)

Q. What document can be used as a birth certificate?

- A. Copy of birth certificate issued by municipal authority

OR

Passport issued by Govt. of India

OR

Transfer certificate/ school leaving certificate showing applicant date of birth, issued by the school last attended by the applicant. In the case of Govt. schools, the transfer certificate/ school leaving certificate should be signed by the principal while in case of private school, it should be countersigned by the competent education authority of the state/district education officer.

Q. What document can be used as proof of residence?

- A. Ration card or Aadhar card or appointment letter from employer on letterhead or water / telephone/ electricity bill/ statement of running bank account or income tax assessment order/ election commission's voter identity card, parent passport in case of minor.

OR

For the learner living in a rented accommodation, any proof of permanent address along with any proof of present rented accommodation will be accepted.

OR

A learner belonging to the category of street children/ destitute/ migrants/ slum dwellers/ orphans not having any residential address at present will have to furnish a self certificate stating the category and certify to not have own residential address. However for the purpose of correspondence with NIOS, such learners will have to furnish a contact address. The self certificate has to be countersigned by the sponsoring guardian including AA/NGO/ orphan home on their letter head. They are required to furnish complete name, designation and address with their official stamp.

Q. Who will provide the identity card to the learner?

- A. An identity card will be issued after confirmation of admission which can be downloaded from NIOS website.

Q. Is there any provision to change the date of birth in the admission form?

- A. Yes, the date of birth given in the admission form shall only be changed once within 3 year from the date of registration.

7. Curriculum and Self Learning Material

Q. What is the time schedule for conducting classes in an accredited agency?

- A. Time schedule for conducting classes is from July to January every year.

Q. Who will provide study material to learners?

- A. Accredited agencies will provide self learning material based on NIOS curriculum.

Q. Is there any exemplar self-learning material developed by NIOS?

- A. Yes, learner can download the exemplar self learning material from NIOS website at [https://www.nios.ac.in/departmentsunits/academic/open-basic-education-\(obe\)/obesimen.aspx](https://www.nios.ac.in/departmentsunits/academic/open-basic-education-(obe)/obesimen.aspx)

However learner has to confirm which learning material utilized by accredited agency.

Q. Is it necessary to attend regular class in an accredited agency/ study center?

- A. No, Minimum 50 hours per language and academic subject and for vocational 80 hrs (30 hrs for theory + 50 hrs for practical) are required to be attended at accredited agency.

Q. When can learners appear in examinations after admission/registration?

- A. A learner can appear in first examination at any level after at least one year of study in the specific level.

Q. How many subjects will be required to qualify level A and level B?

- A. To qualify Level A and level B, a learner should choose a minimum of 4 subjects (one language + 2 academic + one pre-vocational).

Q. How many subjects will be required to qualify level C of OBE programme?

- A. To qualify Level C, a learner should choose a minimum of 5 subjects (1 language + 3 academic + 1 prevocational).

Q. Is it mandatory to learn in Hindi or English medium?

A. No, learners have the choice to select their medium of learning. They can choose Hindi/English/Sanskrit/Urdu or any scheduled language for medium of learning.

Q. How many maximum languages a learner could opt for Level A/B/C.?

A. A learner could opt for a maximum of 3 languages at each level.

Q. How many maximum can be opted at level A, B & C?

A. Maximum 7 subjects can be opted at level A, B & C.

Q. How many maximum pre-vocational subject a learner could opt at level A, B and C?

A. A learner can opt maximum one pre-vocational subject at level A and two pre-vocational subjects at level B & C.

Q. How many study hours per subject is required?

A. The curriculum of OBE programme requires minimum 100 hours of study time per subject. In case of pre-vocational subjects 150 hours (50 hrs theory + 100 hrs practical) are required.

8. Evaluation System

Q. What are the minimum passing grades in each subject?

A. To pass a subject minimum grade 'D' is required.

Q. Will a student get a certificate, if he/she passes all subjects except one?

A. No, a learner would be eligible for a certificate only when she/he qualifies in all the subjects of the concerned level. A facility for credit accumulation is available for OBE learners.

Q. If a learner chooses 7 subjects and passes in only one language, two academic subjects and one pre-vocational subject at level A & B. Will he/she be eligible for certification?

A. Yes.

Q. If a student/ learner chooses 7 subjects and passes in only one language, three academic subjects and one pre-vocational subject at level C. Will he/she be eligible for certificate?

A. Yes

Q. What is the minimum duration of study for each level (A, B and C) in the OBE programme?

A. The minimum duration of study for each level (A, B and C) is an academic year.

Q. Who will assess the learners learning at level A, B and C?

A. Assessment will be done by accredited agency/ study center at each level, as per the guidelines provided by NIOS.

Q. Who will evaluate the examination of the OBE program?

A. Accredited agency/study center will evaluate the examination.

Q. Who will issue the certificate to the learner?

A. A joint certificate signed by NIOS and accredited agency/study center will be issued to learners after successful completion of level concerned. Learners can receive it from accredited agencies.

Q. Is there any fees for issuing joint certificates and dispatching it?

A. No, it is included in the charges deposited at the time of admission.

Contents

| | | |
|-----------|---|--------------|
| 1. | NIOS: Learning Beyond Boundaries | 1-5 |
| 1.1 | NIOS: An Introduction | |
| 1.2 | OBE Programme: An Introduction | |
| 1.3 | Standard of Education and Recognition | |
| 1.4 | Levels of OBE Programme | |
| 1.5 | Multiple Entry System for OBE Programme | |
| 1.6 | Target Group | |
| 1.7 | Features and Flexibilities | |
| 1.8 | Scheme of Studies | |
| 2. | Admission | 6-12 |
| 2.1 | Online Admission | |
| 2.2 | Admission Period | |
| 2.3 | Procedure for Online Admission | |
| 2.4 | Procedure for Online Admission through Regional Centres/AA (Study Centre) | |
| 2.5 | Processing Charge Structure for Admission | |
| 2.6 | How to Pay the Processing Charges | |
| 2.7 | Cancellation of Admission | |
| 2.8 | Confirmation of Admission | |
| 2.9 | Other Facilities after admission through E-service | |
| 2.10 | Procedure for correction in admission records through E-service only | |
| 3. | Instructional Process at NIOS | 13-14 |
| 3.1 | Curriculum and Self Learning Material | |
| 3.2 | Study hours under OBE Programme | |
| 3.3 | About AA/Study Centre of the Learner | |
| 4. | Evaluation System | 15-16 |
| 4.1 | Credit Accumulation | |
| 4.2 | Issue of Achievement cum Transfer Certificate | |
| 4.3 | Certification Criteria | |
| 4.4 | Evaluation Norms (Grading Pattern) | |
| 4.5 | Issue of Duplicate Documents | |
| 4.6 | Unfair Means (UFM) | |
| 5. | General and Specific Provisions (Disability wise) in the context of NIOS examination | 17-21 |
| 5.1 | Procedural Requirements | |
| 5.2 | General Provisions | |
| 5.3 | Specific Provisions | |
| | Appendix –A | 22-24 |
| | Appendix –B | 25-25 |
| | Appendix –C | 26-26 |

1.1 NIOS: An Introduction

The National Institute of Open Schooling (NIOS) was set up as the National Open School in 1989 by the Ministry of Education, Government of India, as an autonomous organisation. It provides educational opportunities to persons who wish to study further and qualify for a better tomorrow. The Mission of NIOS is to provide education to all with special concern for girls and women, rural youth, working men and women, SCs and STs, differently abled persons and other disadvantaged persons who because of one or other reason could not continue their education in the formal system of education. The aim of NIOS is to reach the unreached. The NIOS has taken special initiatives for imparting education to Jail Inmates by setting up Study Centres in Jails across the country and granting full fee exemption. The NIOS operates through a network of Twenty Three Regional Centres, two Sub-Regional Centres, Two NIOS Cell and more than Eight thousand Accredited Institutions (AIs), Accredited Vocational Institutions (AVIs) and Accredited Agencies (AAs) popularity known as Study Centres. These Centres are located in India, Nepal and Middle East Countries. For academic courses, admission is through Online only.

1.2 OBE Programme: An Introduction

The Open Basic Education (OBE) programme was initiated in June 1994 with the aim of providing primary and upper primary education through alternative means of open schooling to adult neo-literates who are not able to take advantage of the formal system of schooling. It is an equivalency programme and provides three tier education under OBE programme i.e. Level A (equivalent to class 3), Level B (equivalent to class 5) and Level C (equivalent to class 8). In the year 2000 the programme was extended to cover children between 6 to 14 years age group also with the help of Accredited Agencies (AAs).

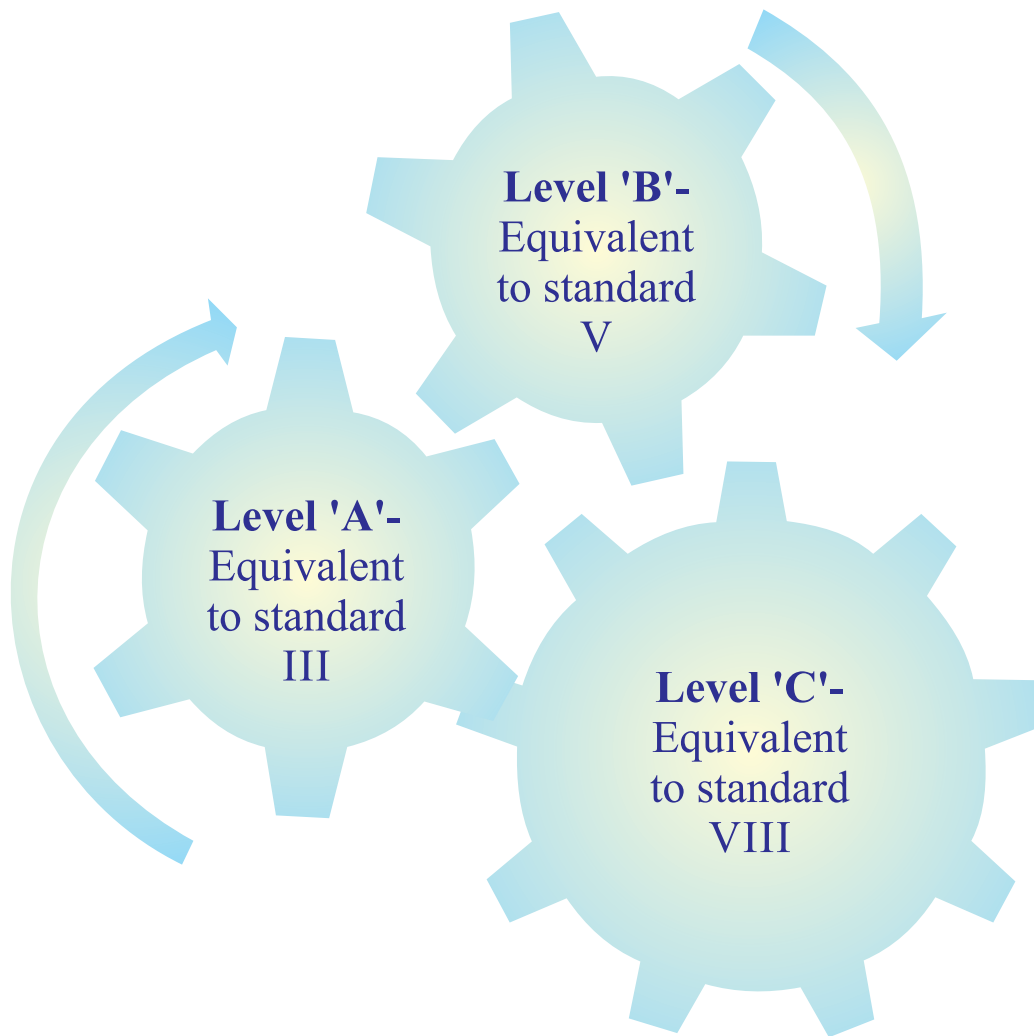
NIOS reaches out to marginalized groups who may have been unable to attend school earlier, due to physical or social inaccessibility, by offering them an alternative channel through open and distance learning (ODL) mode of education for primary schooling. The flexibility of the open learning system will further ensure a higher retention rate as well as an increase in the learning achievement as learners would now be able to pace their learning. This exercise would provide high quality schooling to children with an aim to achieve universalisation of elementary education.

The Open Basic Education programme has been recognised by the Government of India as equivalent education to that of the formal school, for purposes of further education and employment. Different States have indicated their interest in the programme for their out of school children as well as for adolescent and adult neo literates. The OBE is offered in some states as an Equivalency Programme under the Continuing Education (CE) scheme of the National Literacy Mission (NLM).

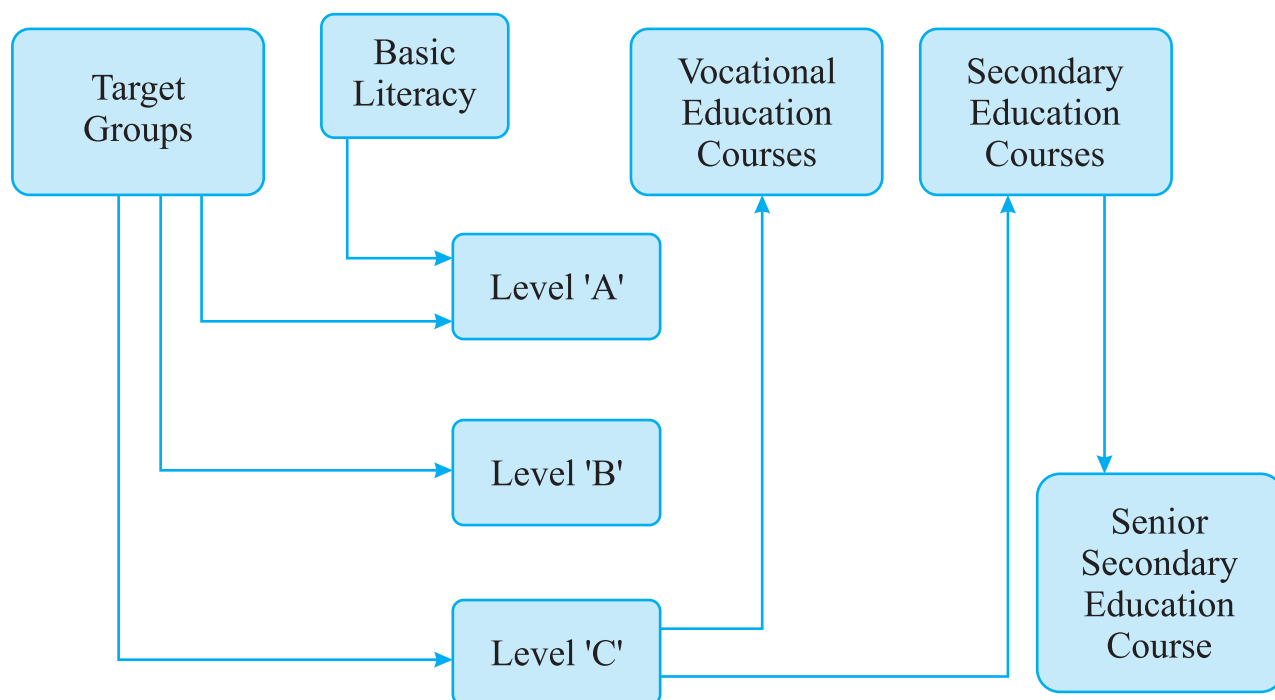
1.3 Standard of Education and Recognition

There are three National Boards of School Education viz., NIOS, CBSE and CISCE. The National Institute of Open Schooling is an autonomous institution under the Ministry of Education, Government of India. It is vested with the authority to impart school education upto pre-university level, conduct examinations and award certificates. The certificates awarded by NIOS are recognised for higher education, Government jobs and for all other purposes.

1.4 Levels of OBE Programme



1.5 Multiple Entry System for OBE Programme



1.6 Target Group

The programme is being conducted for children of 6-14 years age group and adolescents/adults of 14 years of age and above. The target group consists of following categories of learners for adolescents/adults of 14 years of age and above:

Adolescents and Adults

- Dropouts from formal system of education
- Neo-literates of the National Literacy Mission's Continuing Education Scheme
- The adults of marginalized groups, in particular women such as Scheduled Castes (SC), Scheduled Tribes (ST), minority, Below Poverty Line (BPL) persons, nomads, migratory population and first generation learners
- Those who qualified the Basic Education Literacy Assessment of NLMA.

1.7 Features and Flexibilities

- Registration period valid for a maximum period of five years
- Flexibility of choosing any language as the medium of study from Hindi, English, Sanskrit, Urdu or any Regional Language
- Minimum age for admission is 7 years as on 31st March of the year
- Assessment by the Accredited Agencies (AAs) as per guidelines provided by NIOS
- First examination at any level in the next year from the year of admission

- The facility of credit accumulation is available for OBE learners. A learner would be eligible for the certificate only when he/she qualifies in all the subjects for the concerned level.
- The minimum duration of study for each level A/B/C is one academic year.

1.8 Scheme of Studies

Table 1: Scheme of Studies for OBE at Level A, B and C

| Level 'A' | Level 'B' | Level 'C' |
|--|--|--|
| Minimum 1 Language (from Group-1) + Minimum 2 Subjects (from Group-2) + Minimum 1 Pre Vocational Subject (from Group-3) - Total 4 Subjects | Minimum 1 Language (from Group-1) + Minimum 2 Subjects (from Group-2) + Minimum 1 Pre Vocational Subject (from Group-3) - Total 4 Subjects | Minimum 1 Language (from Group-1) + Minimum 3 Subjects (from Group-2) + Minimum 1 Pre Vocational Subject (from Group-3) - Total 5 Subjects |

Note: Each subject has been given a subject code. List of subject codes is given in Table 2

- A learner can take upto maximum **seven subjects** including minimum one language or more (Maximum three languages).
- A learner has freedom to opt for one additional Vocational subject at levels 'B' and 'C'.

Table 2: Subjects at Level A, B and C

| S.No. | Subject | Code | | |
|----------------------------|-----------|-----------|-----------|-----------|
| | | Level 'A' | Level 'B' | Level 'C' |
| Group 1 - Languages | | | | |
| 1. | Hindi | A101* | B101* | C101* |
| 2. | English | A109 | B109 | C109* |
| 3. | Bengali | A110 | B110 | C110 |
| 4. | Marathi | A111 | B111 | C111 |
| 5. | Telugu | A112 | B112 | C112 |
| 6. | Urdu | A113 | B113 | C113 |
| 7. | Gujarati | A114 | B114 | C114 |
| 8. | Kannada | A115 | B115 | C115 |
| 9. | Sanskrit | A116* | B116* | C116* |
| 10. | Punjabi | A117 | B117 | C117 |
| 11. | Tamil | A118 | B118 | C118 |
| 12. | Oriya | A119 | B119 | C119 |
| 13. | Malayalam | A120 | B120 | C120 |
| 14. | Assamese | A121 | B121 | C121 |
| 15. | Kashmiri | A122 | B122 | C122 |

| | | | | |
|--|-------------------------------------|-------|-------|-------|
| 16. | Konkani | A123 | B123 | C123 |
| 17. | Dogari | A124 | B124 | C124 |
| 18. | Nepali | A125 | B125 | C125 |
| 19. | Bodo | A126 | B126 | C126 |
| 20. | Manipuri | A127 | B127 | C127 |
| 21. | Maithili | A128 | B128 | C128 |
| 22. | Santhali | A129 | B129 | C129 |
| 23. | Sindhi | A130 | B130 | C130 |
| Group 2 - Academic Subjects | | | | |
| 24. | Environmental Studies | A102* | B102* | - |
| 25. | Mathematics | A103* | B103* | C103* |
| 26. | Social Science | - | - | C102* |
| 27. | Science | - | - | C105* |
| 28. | Basic Computer Skills | A104* | B104* | C104* |
| 29. | Veda | A145# | B145# | C145# |
| 30. | Vijnana - Bharatiya Jnana Parampara | A146# | B146# | C146# |
| 31. | Yoga | A147# | B147# | C147# |
| Group 3 - Pre-Vocational Subjects | | | | |
| 32. | Cutting, Tailoring and Dress Making | A106* | B106 | C106* |
| 33. | Beauty Culture | A107 | B107 | C107 |
| 34. | Food Processing | A108 | B108 | C108 |
| 35. | Toy Making | A131 | B131 | C131 |
| 36. | Painting | A132 | B132 | C132 |
| 37. | Bee Keeping | A133 | B133 | C133 |
| 38. | Art and Craft | A134 | B134 | C134 |
| 39. | Furniture Making | A135 | B135 | C135 |
| 40. | Bamboo Craft | A136 | B136 | C136 |
| 41. | Vermicomposting | A137 | B137 | C137* |
| 42. | Agriculture | A138 | B138 | C138 |
| 43. | Bakery | A139 | B139 | C139 |
| 44. | Health and our Food | A141 | B141 | C141 |
| 45. | Flower Farming | A142 | B142 | C142 |
| 46. | Child Care Assistance | A143 | B143 | C143 |
| 47. | Vocational Skills | A149# | B149# | C149# |

Note:

- * - Exemplar SLM is available in Hindi and English medium.
- # - Exemplar SLM is available in Hindi, Sanskrit and English medium.

NIOS offers Online admission facility to its learners at all three levels of OBE Programme. The detailed procedure for Online Admission is given below:

2.1 Online Admission

Admissions are 100% Online through website www.nios.ac.in and the Student Portal of NIOS www.sdmis.nios.ac.in in order to facilitate the learners to register for admission. Learner can directly register Online by following the procedure laid down for OBE Programme.

Under this programme, the learner has three options :

- i. Register Online directly by following the procedure laid down in **Section 2.3**.
- ii. Visit nearest AA (Study Centre) and take their help for Online registration. The list of Accredited Agencies (AAs) is available on NIOS website.
- iii. Visit the concerned Regional Centre of NIOS and take its help for online-registration. The list of Regional Centres is at **Appendix-A**.

2.2 Admission Period

The Online Admission is open for all the learners as per the laid down eligibility criteria for the Level A, B and C. Admission period for session 2022-23 is as follows:

Table 3: Dates for Online Admission

| Level | Dates of Online Admission | Examination in which the learners can appear first time |
|-------|--|---|
| A/B/C | From 1 st April to 15th September | February, 2023 |

2.3 Procedure for Online Admission

Log on to NIOS website www.nios.ac.in or the Student Portal of NIOS www.sdmis.nios.ac.in and read the instructions and procedures carefully and keep ready all the necessary information and scanned images(s) of Photograph, Signature and relevant Document as per Entry Requirements mentioned in Table-4 before filling the Online Application Form. Learner should also be ready with valid Mobile Number/valid e-mail ID.

Table 4: Entry Requirements

| Entry Requirement | Requirements/Dates | Remarks |
|---|--|--|
| A. Admission Level A, B and C | Minimum age – Above 14 years at any level | Learner should have completed the minimum age as on 31 st March, 2022 |
| B. Last date for admission | 15th September, 2022 | |
| C. Minimum Educational Qualification | No minimum educational qualification is required at any level | |
| D. Essential Supporting Documents for Date of Birth | <ol style="list-style-type: none"> 1. Birth Certificate issued by the Municipal Authority or District Office of the Registrar of Birth and Deaths for those born on or after 26.01.1989. OR 2. Passport Issued by Govt. of India OR 3. Original Transfer Certificate/School Leaving Certificate showing applicant's date of birth, issued by the school last attended by the applicant. In case of Govt. schools, the Transfer Certificate/School Leaving Certificate should be signed by the Principal while in the case of Private schools, it should also be countersigned by the competent education authority of the State/or District Education Officer. OR 4. Aadhaar Card issued by the concerned Agency of Govt. of India | <p>Note:</p> <ol style="list-style-type: none"> i. In case of Orphan/Juvenile/Street Children, the Medical Legal Certificate alongwith an Affidavit issued by First class Magistrate or copy of Aadhaar Card has to be provided as proof of Date of Birth. ii. In the absence of Birth Certificate, a certificate attested by Village Sarpanch should be attached. iii. Date of birth once given in the Admission Form shall not be changed. Please check and state the correct date of birth in the Admission Form. |
| E. Proof of Residence | <p>Proof of residential address is essential for all. Attach a copy of any one of the following.</p> <ol style="list-style-type: none"> 1. Ration Card, or Aadhar Card, or Appointment Letter from the Employer on Letter Head, or Water/Telephone/Electricity Bill/Statement of running Bank Account or Income Tax Assessment Order/ Election Commission's Voter Identity Card, Parents Passport in case of minor. 2. For the learner living in a rented accommodation, any proof of permanent address along with any proof of present rented accommodation will be accepted. 3. A learner belonging to the category of street children/ destitute/migrants/slum dwellers/orphans not having any residential address at present will have to furnish a self certificate stating the category (mentioned above) and certify to not have own residential address. However, for the purpose of correspondence with NIOS, such learner will have to furnish a contact address. The self certificate has to be countersigned by the AA/ NGO / Orphan Home with complete name, designation and address along with their official stamp. | <ol style="list-style-type: none"> i. Online Admission Form without uploading required supporting documents will be rejected and fee will not be refunded. ii. In case a learner has been debarred by any other Board for using unfair means at any stage, he/she will not be eligible for admission in NIOS. iii. In case a learner conceals the requisite information, admission will be cancelled, even at later stage. |
| F. Other documents | <p>Original scanned copy of:</p> <ol style="list-style-type: none"> i. Recent Passport size colour Photograph ii. Signature of learner (preferably in Black Ink). iii. Disability Certificate (in case of having any kind of disability) | |

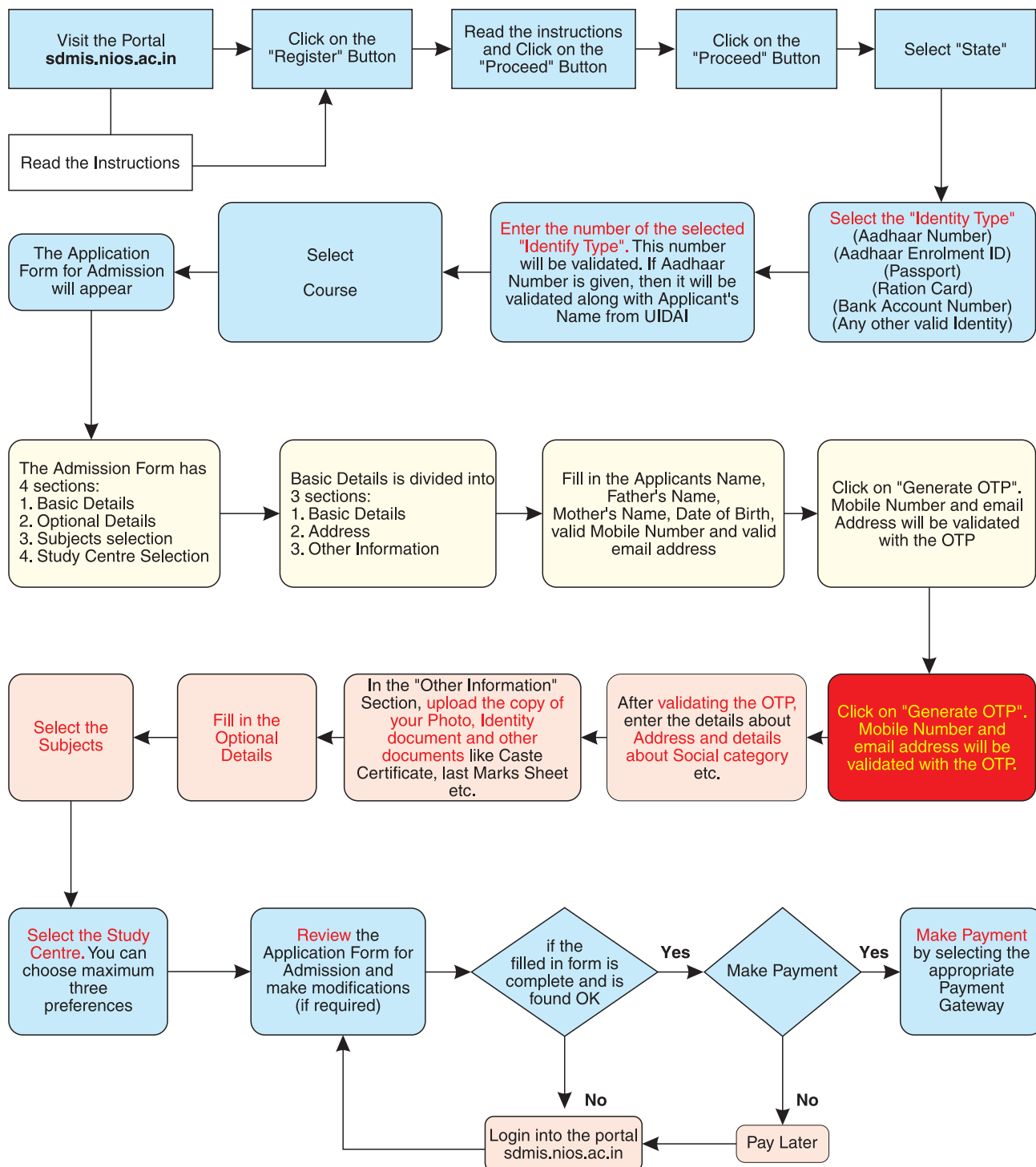
ii. Important points to consider while filling the Application Form Online:

- a. Please note that online Registration for Admission closes on the last date of admission cycle. A learner submitting application form for Admission is required to make payment of Processing Charges either with the Application or within 10 days of submitting the application online. In case, a learner submits online application form admission towards the closing date of admission cycle, then such learner is required to make online payment of the charges within five days of the closing date of the cycle.
- b. After successful verification of the documents, Processing Charges and the information submitted by the learner during registration, the admission will be confirmed and an Enrolment Number will be generated. Appropriate communication will be sent to the learner through email and SMS after the admission is confirmed by NIOS.
- c. If the transaction fails, then the learner has to make the transaction again.
- d. The learner can make the payment later as per norms by logging into the Student Portal of NIOS (sdmis.nios.ac.in) using the User Name and Password Sent to the registered email.
- e. The dashboard in the learner's login will permit management of all the student related activities through e-services.
- f. The learner is advised to furnish correct and authentic information and to upload valid, authentic and relevant color photo/color documents in the respective sections in the Application Form. No changes shall be permitted in the Application Form after the payment is done. Furnishing incomplete/wrong information or uploading irrelevant Photo/Documents will result in NIOS taking action to cancel the Registration/Admission at any point of time. For queries regarding online admission, the learner can e-mail to lsc@nios.ac.in.
- g. The learner is not required to send/submit the hard copy of the Admission form and the documents but it is mandatory to upload the original scanned copy of required documents online. If required by NIOS Management or if any other discrepancy is found in the submitted online Application Form/Documents, the learner shall be required to submit the printed application form along with the Documents and Photograph. This requirement will be communicated to him/her through email and SMS.

One email address can be used only once and one Mobile Number and one Address can be used for registration of maximum three learners.

A User Name and a Password will be created for the learner and the details will be sent to the authenticated email address which was mentioned in the basic details of the learner. This email will also contain the instructions for further processing. Keep the user Credentials (user name and Password) safe.

National Institute of Open Schooling (NIOS) Diagrammatic Presentation of the Process of Online Admission in the OBE Programme, Level A, B and C



2.4 Procedure for Online Admission through Regional Centres/AA (Study Centre)

All AAs (Study Centres) of NIOS are authorised to open an Online Registration Counter for facilitating learners to take Online admission. They will also help learners in pre-admission counseling and features of NIOS. **The AA will follow the same procedure for Online registration as mentioned in section 2.3 above.**

2.5 Processing Charge Structure for Admission

The processing charge is charged for Registration, verification of admission, data processing, monitoring of examinations, processing of result data, preparation of Joint Certificates and sending them to AAs for issuing to learners. The level wise charges are:

Table 5: Level Wise Processing Charge

| Level | Charges (in Rs.) per learner |
|-------|------------------------------|
| ‘A’ | 300* |
| ‘B’ | 500* |
| ‘C’ | 800* |

Processing Charges does not include the price of Study Material as it is not provided by NIOS.

** In addition to the above Rs. 50/- will be admissible for every online transactions*

2.6 How to Pay the Processing Charges

The fee can be deposited Online through Credit Card /Debit Card/Net Banking, available Payment Gateways.

2.7 Cancellation of Admission

Learner’s admission will be cancelled in case:

- The Processing charge paid is short,
- The supporting documents are not appropriate,
- False documents have been submitted, if incorrect or wrong information is given,

Note:

- Admission once cancelled will not be re-considered.
- Processing charge once paid will not be refunded on any account.

2.8 Confirmation of Admission

- Admission to a particular level is confirmed by NIOS by issuing an online Identity Card having learner’s admission particulars as per the record available in NIOS. In case any discrepancy is

noticed at any stage of admission and even if the Identity Card has been issued, the admission will be cancelled and result will not be declared even if the learners appeared in examination.

- ii. Do check the particulars given in the Identity Card. In case, there is any discrepancy in learner's personal details, address, photo etc., the same should be corrected through E-service immediately. The Learner should retain the Identity Card carefully till completion of study in NIOS.

The Correction in the Admission Record will be made as per rules only (which are available on NIOS website).

2.9 Other Facilities after Admission through E-services

Services which can be availed through e-services are:

- i. Issue of Duplicate Identity Card
- ii. Change of Subject/Additional Subject
- iii. Change of Study Centre/AA
 - Issue of Duplicate Documents
 - Minor Corrections in Spelling of Name, Father's Name, Mother's Name and/or Guardian's Name
 - Change of learner's name
 - Correction of Date of Birth, Name, Father's Name, Mother's Name, Guardian's Name

2.10 Procedure for Correction in the Admission Records through e-services only

The admission to a particular level is confirmed by NIOS by issuing an online Identity Card having details of Learner's Name, Date of Birth, Subjects opted etc. These details are the same as filled in by the learner at the time of admission in NIOS. The learner is requested to check the details immediately on the Student Portal of NIOS **www.sdmis.nios.ac.in**.

In case, there is any discrepancy in learner's personal details, address, photo etc., the same should be corrected through e-services.

- Correction in the admission records will be considered prior to appearing in the first examination or within 3 years of learners from the date of registration for admission upon uploading of supporting documents.
- No request for correction will be accepted after 3 years from the date of registration.
- Applicable fee for above corrections, in addition to fee for revised document as per NIOS norms, will be charged online.
- 'Latest correction rules' will be applicable at the time of making request for correction in the record.
- The revised corrected document (Achievement-cum Transfer Certificate) will be issued only after submission of the Original Document with incorrect details issued by NIOS and requisite fee.

Table 6: Fee for Correction in Admission Record

| Sl. No. | Type of Correction | Amount (In Rs.) |
|----------------|--|------------------------|
| 1. | Correction in Learner's name / Father's name / Mother's name / Guardian's name after admission | 100 |
| 2. | Correction in the Date of Birth of the learner | 100 |
| 3. | Change in Learner's name / Mother's name / Father's name/ Guardian's name | 200 |
| 4. | Change in the Date of Birth of the learner (as per rule) | 200 |
| 5. | Correction of Photograph | 100 |
| 6. | Change in learner's address | 100 |
| 7. | Change of Study Centre | 400 |
| 8. | Duplicate Identity Card | 100 |
| 9. | Issue of Duplicate Identity Card for the second time. | 500 |

3.1 Curriculum and Self Learning Material

- The curriculum for OBE programme has been developed by NIOS.
- The subjects offered under OBE Programme at different levels include Academic and Vocational Subjects. This has been done in order to introduce the learners to the world of work.
- The curriculum gives opportunity to learners to think about life related issues.
- It also talks about National concerns and issues related to societal concerns, social harmony, national integration, peace and values.
- Efforts have been made to provide activity based learning.
- The talent and virtues of learners are also recognised.
- Sample learning materials for OBE are available on NIOS website.
- AAs may also use the text books developed by the State Government or other national level Board of School Education. Therefore, **learners are advised to contact the concerned AA for the Self Learning Material/Text Book used by the AA.**

3.2 Study Hours under OBE Programme

- The Curriculum of OBE Programme requires minimum 100 hours of study time per subject.
- However, in case of a pre-vocational subject, additional time of 50 hours should be given for practical work (Total 150 hours for One vocational subject.)
- The Study Hours per Subjects are as follows:

Table 7: Study Hours

| Level | Subject | Total Hrs. | Study Hrs. at Study Centre (PCP) | Study Hrs for self Study |
|--------------|---------------------------|------------|----------------------------------|-------------------------------|
| A and B | One Language | 100 | 50 | 50 |
| | Two Academic Subjects | 200 | 100 | 100 |
| | One Vocational Subject | 150 | 30 (Theory) +70 (Practical) | 20 (Theory)+30 (Practical) |
| Total | Total subjects= 4 | 450 | 250 | 200 |
| C | One Language | 100 | 50 | 50 |
| | Three Academic Subjects | 300 | 150 | 150 |
| | One Vocational Subject | 150 | 30 (Theory) +70 (Practical) | 20 (Theory)+30 (Practical) |
| Total | Total Subjects = 5 | 550 | 300 | 250 |

Learner may develop habit of self and independent learning. This will help in mainstreaming and continuation in lifelong learning.

3.3 About AA/Study Centre of the Learner

The Accredited Agency (Study Centre) will provide the following services **without any additional charges**:

- Academic support to learners to the extent prescribed in the curriculum at each level.
- Counseling to solve learner's problems/queries related to the course.
- Informing the examination date sheet, examination centre and other important information.
- Conducting Examination.
- Issue achievement-cum transfer certificate jointly after receiving from NIOS without any additional fee.

The following important points should be remembered for examination:

- i. Examination is held once in a year in the month of February on the dates fixed by concerned Accredited Agency.
- ii. The learner registering for the first time would be required to study for one year before appearing for an examination.
- iii. The medium of examination may be Hindi/Sanskrit/English/Urdu/ Regional Language.
- iv. The examination papers for levels A and B shall be of 100 marks of two and half hours duration; while that for Level C shall be of 3 hours and 100 marks.
- v. The date sheet of examination will be prepared by concerned Accredited Agency.

4.1 Credit Accumulation

A learner can avail nine chances to appear in the Public Examinations spread over a period of five years within the validity of the admission. NIOS accumulate credits in concerned subjects in its database till the learner clears all the required subjects for certification. Learners can avail this flexible scheme of examination in order to learn well and to get good results.

4.2 Issue of Achievement cum Transfer Certificate

A Joint Certificate would be issued to the eligible candidates jointly signed by the concerned Accredited Agency and the National Institute of Open Schooling, (NIOS).

4.3 Certification Criteria

In order to pass at any level and get a certificate of OBE Programme, the criteria laid down by NIOS are given in Table-8:

Table 8: Certification Criteria at different levels of Open Basic Education Examinations

| Level 'A' | Level 'B' | Level 'C' |
|--|--|--|
| Minimum 1 Language (from Group-1) + Minimum 2 Subjects (from Group-2) + Minimum 1 Pre Vocational Subject (from Group-3) - Total 4 Subjects | Minimum 1 Language (from Group-1) + Minimum 2 Subjects (from Group-2) + Minimum 1 Pre Vocational Subject (from Group-3) - Total 4 Subjects | Minimum 1 Language (from Group-1) + Minimum 3 Subjects (from Group-2) + Minimum 1 Pre Vocational Subject (from Group-3) - Total 5 Subjects |

4.4 Evaluation Norms (Grading Pattern)

Table 9: Grading Pattern

| Marks Range (in %) | Grade | Description |
|--------------------|-------|---------------------------------|
| 75-100 | A | Excellent |
| 60-74 | B | Very Good |
| 45-59 | C | Good |
| 33-44 | D | Satisfactory |
| Below 33 | E | Subject yet to be (SYC) cleared |

4.5 Issue of Duplicate Documents

The fee for revised duplicate documents will be charged as mentioned below:

Table 10: Miscellaneous Fee

| Nature of Fees | Amount of Fees (in Rs.) |
|--|-------------------------|
| Duplicate copy of the Achievement cum Transfer Certificate | 200/- |
| Postal Charges (If the above documents are required by Speed Post) | 50/- |
| Verification of NIOS documents (for Private companies and individual learners) | 500/- |
| Verification of certificate on urgent basis within 48 hours from the date of receipt (for Private companies and individual learners) | 1000/- |
| Postal Charges (If the above documents are required by Speed Post) | 50/- |

Note:

- Apply online through E-service for obtaining duplicate copy of Achievement cum Transfer Certificate.
- Duplicate I-cards will not be issued to certified candidates.
- In case of duplicate certificate, an affidavit is required.

4.6 Unfair Means (UFMs)

In case of use of unfair means by the learner in examination, the examination will be cancelled and could be further debarred from appearing in the future examinations. The learner's admission may also be cancelled.

General and Specific Provisions (Disability wise) in the context of NIOS Examinations

The learners with disabilities like blindness, low vision, speech impairment, locomotor disability and any other disability which causes difficulty in writing the examinations are to be provided with need based provisions such as amanuensis, technological devices etc. The provisions shall be according to their disabilities as per the procedure notified by NIOS from time to time.

The provisions made have been precisely defined in clauses and sub-clauses for clarity.

5.1 Procedural Requirements

The learners with disabilities as defined in the Persons with Disabilities Act 1995 and the National Trust Act, 1999 and those with specific learning difficulties who wish to avail certain facilities or need some reasonable accommodations in the examinations are required to submit an application in the given format to the concerned Regional Centre of NIOS. A learner should clearly indicate the support required along with the certificate issued by an appropriate authority indicating the nature of disability and the extent of the disability.

A Medical Certificate issued by any of the following authorities is required for availing specific provisions by learners with disability:

- i. Disability Certificate(s) issued by Government Hospitals under Central or State Governments.
- ii. Disability Certificate(s) issued by recognized institutes of national level such as National Association for the Blind, Spastic Society of India etc.
- iii. Disability Certificate(s) issued by non- governmental organizations/ practitioners registered with Rehabilitation Council of India/ Central Government/ State Government of the respective States.

While appearing in the examination, the learner should write disability as mentioned in the certificate on the top of the answer book.

5.2 General Provisions

5.2.1 Provision of Additional Time

The condition of learners with disabilities will have to be certified as per approved procedure as mentioned above for determining requirement of additional time.

- i. An additional 20 minutes per hour of examination for each of the subject will be provided to compensate for additional time required for reading by the amanuensis, understanding the questions, fatigue while dictating to the Amanuensis, sitting continuously etc.

- ii. If the condition indicated in the Medical Certificate specified above requires short break, a break of not more than ten minutes per hour will be permitted in addition to above.

5.2.2 Provision of Amanuensis

The services of an amanuensis, reader, lab assistant can be availed as per requirement of the subject concerned. The following categories of learners will be eligible for this facility:

- a. Learners with Autism
- b. Cerebral Palsy
- c. Intellectual Disability including Mental Retardation
- d. Multiple Disabilities
- e. Blindness, Low Vision
- f. Speech Impairment or Hearing Impairment
- g. Any other disability such as learners with specific learning disabilities like dyslexia, dysgraphia, dyscalculia, dyspraxia and developmental aphasia certified as per procedure mentioned above.
 - (i) A learner with poor hand function and speech and hearing impairments may be provided an amanuensis who can understand communication including sign language.
 - (ii) A learner with hand injury may be provided the facility of an amanuensis.
 - (iii) In case of sudden illness resulting in temporary disability, services of an amanuensis will be allowed on furnishing duly certified Medical Certificate specified above.
 - (iv) A learner with disabilities who may choose the use an amanuensis may be permitted to draw the diagrams etc., himself/herself if he/she so desires.
 - (v) A learner with disabilities may be provided the services of a Reader as and when required.
 - (vi) In case a learner needs a Care Giver inside the Examination Hall during the examination, a prior application in the given format is required to be submitted along with the Application Form, and permission has to be obtained.
 - (vii) In case a learner needs a Care Giver to help in reaching the examination room and find particular seat, a prior application in the given format is required to be submitted along with the Application Form and permission has to be obtained.
 - (viii) In specific cases, near relative, Care Giver or concerned teacher may be present in the examination hall only for the purpose of motivation and support to the candidate. Prior permission for this needs to be obtained from the concerned Regional Director, Regional Centre, NIOS.

Note:

- i. The terms **scribe** and **amanuensis** are synonymous and any other term signifying the same can be used for this purpose. In this document, the term **amanuensis** has been used.
- ii. The learner is allowed to opt for different amanuensis for different subjects, if necessary. The learner will have to clearly specify the language in which the Amanuensis is required.

- iii. The format of application for the entry of the Care Giver inside the premises of the Examination Centre is available in the Examination Centre and on the NIOS website.
- iv. Amanuensis/scribe can be arranged by the learner himself/herself or can be provided by the Centre Superintendent. The procedure of approval and eligibility of amanuensies is subject to provisions mentioned of in this chapter.

5.2.2

(a) Eligibility to be an Amanuensis

- i. The amanuensis should not be from the same subject(s) in which the learner shall be appearing for the examination. However, if the learner and the amanuensis, reader, lab assistant are from the same stream, then the educational qualification of the amanuensis, reader, lab assistant should be at least one class lower than that of the learner with disability appearing for examination.
- ii. There will be flexibility in accommodating any change in amanuensis, reader, lab assistant in case of emergency. More than one amanuensis, reader for writing different papers as per requirement of the learner will be allowed.
- iii. The learner shall also have the option of meeting the amanuensis a day before the examination in presence of the Centre Superintendent.
- iv. The Centre Superintendent will ensure that the facilitative provisions are granted to the learner with disabilities and inform the compliance to the Regional Director, Regional Centre, NIOS. The Centre Superintendent of the Examination Centre concerned may choose a suitable person from the school as far as possible and forward name with photograph immediately to the concerned Regional Centre with a report giving full particulars of the learner and of the amanuensis, reader, lab assistant for consideration and approval.

(b) Fee for amanuensis, reader interpreter using sign language:

- i. A fee of Rs. 100/- per session of examination will be given to the amanuensis per learner (with disability) by the Superintendent of the Examination Centre. The learners under the category Para 6.2.2 (except for iv) will not be required to pay any charge/fee.
- ii. The learners with temporary disabilities using the facility of amanuensis will have to pay the fee themselves.

5.2.3 Use of Computers

The learners with minimal hand function, blindness and low vision and learners with learning disability, cerebral palsy, autism and any other disability will be allowed to use computer if he/she makes a request in advance to the concerned Regional Director.

- i. The learners may bring their own computers along with assistive devices if they so wish.
- ii. The learner may also bring the required software (including the Text Reading Software) to enter the responses to the questions.
- iii. The Centre Superintendent would ensure adequate power supply and a printer to print the answer scripts of the learners using computers.

Note: The Centre Superintendent will have the right to check the machines for no pre-fed information. Learners will need to report one hour in advance to complete these formalities.

5.2.4 Seating Arrangements and Other Support

- a. Wheel Chair user, and mobility impaired learners will be given the facility to write the examination on the ground floor in case the examination room is inaccessible.
- b. The Building should be accessible and proper ramps and other support should be available. The Centre Superintendent will ensure availability of an accessible toilet for learners with disability.
- c. The Centre Superintendent will make arrangements to seat maximum of four learners in a separate Examination Room with a separate Invigilator for supervision.
- d. However, a single room with an invigilator may be made available for learners with specific disability, if so required.
- e. The examination room should be well lit, ventilated and away from noise and distraction.

5.3 Specific Provisions

These are specific provisions in addition to the general provisions mentioned under Section

5.3.1 Learners with Blindness and Low Vision

- i. Learners with blindness and low vision will be provided alternate questions wherever applicable, in the theory papers in place of the questions related to marking and labelling of maps, construction of geometrical figures and diagrams/ graphs etc.
- ii. Visually Impaired learners may be allowed to use amanuensis/take examination using Braille Typewriter, or Computer. The learners should arrange to bring their own Braille Typewriter, etc., for examination purposes.

5.3.2 Learners with Hearing Impairment

- i. Interpreter using sign language may be allowed in the Examination Room to help the learner with hearing impairment to understand the instructions.
- ii. One interpreter may be adequate for each Examination Room. The Centre Superintendent may take decision regarding arrangement of an Interpreter.

Note: The learner is allowed to opt for different scribes for different subjects, if necessary. The learner will have to clearly specify the language in which the scribe is required.

5.3.3 Learners with Autism, Cerebral Palsy, Intellectual Disability (Mental Retardation), Multiple Disabilities

- i. Computers with adapted hardware like trackball instead of mouse, augmentative communication boards (illustrative and not exhaustive) may be allowed.
- ii. Adapted chair, table, bed, etc., may be allowed in the Examination Room in case of learners with specific disabilities.
- iii. Provision may also be made for reading the questions wherever necessary.

Note: The learners may arrange for their own tools and equipment.

5.3.4 Learners with Learning Disability

Provision of amanuensis, use of computer and additional time is permitted as per the procedure specified under section 6.1 and also as mentioned under General Conditions.

5.3.5 Leprosy-Cured Learners

General provisions will be applicable to leprosy cured learners on submitting Medical Certificate as mentioned under Section 6.1.

List of the Regional Centres of NIOS

| Name of the Region | Address of the Regional Centre | Jurisdiction |
|--------------------|---|--|
| 1. ALLAHABAD | National Institute of Open Schooling Regional Centre 19/17, Kasturba Gandhi Marg, Kachahari Road Allahabad - 211002 (Uttar Pradesh) Ph.: (O) 0532-2548154 (Fax) 0532-2548149 e-mail: rcallahabad@nios.ac.in | Uttar Pradesh |
| 2. AMETHI | National Institute of Open Schooling Regional Centre Lakhara House, Munshiganj Road, Sarvanpur-227405, Amethi, (Uttar Pradesh) Email: rcamethi@nios.ac.in | Amethi & Gauriganj |
| 3. BENGALURU | National Institute of Open Schooling Regional Centre Office of the Director (Vocational Education) 3rd Floor, PUE Bhawan, 18th Cross Sampige Road, Malleswaram, Bengaluru - 560012, Karnataka, Ph.: 23464223 Fax: 23464222 Email: rcbengaluru@nios.ac.in | Karnataka |
| 4. BHOPAL | National Institute of Open Schooling Regional Centre Manas Bhawan, Shyamla Hills, Bhopal - 462002 (M.P.) Ph.: 0755-2661842, 2660331 Fax : 0755-2661842 e-mail: rcbhopal@nios.ac.in | Madhya Pradesh |
| 5. BHUBANESHWAR | National Institute of Open Schooling Regional Centre ELTI Campus Maitrivihar, Chandrashekhar Pur, Bhubaneswar-751023 Ph. No. 0674-2302688 Email.: rcbbbsr@nios.ac.in Website: http://rcbbsr.nios.ac.in | Odisha |
| 6. CHANDIGARH | National Institute of Open Schooling Regional Centre YMCA Complex, Sector-11C, Chandigarh-160 001 Ph.:(O) 0172-2744915, 3950979 Fax : 0172-2744952 e-mail: rcchandigarh@nios.ac.in | Haryana (Excluding Gurgaon, Faridabad Palwal & Jhajjar) Punjab and Chandigarh |
| 7. CHENNAI | National Institute of Open Schooling Regional Centre Lady Willington Campus, Kamrajai Salai, Triplicane, Chennai-600005, Tamilnadu Ph. no. 044-28442237 Fax: 044-28442239 e-mail: rcchennai@nios.ac.in | Tamil Nadu, Pondicherry |
| 8. DEHRADUN | National Institute of Open Schooling Regional Centre Amrit Plaza Building, Near Bengali Kothi Chowk Moth Rowala Road, P.O. Ajapur Kalan, Dehradun - 248001 Ph.: (O) 0135- 2532566; 2532592; Fax : 0135-2629166 e-mail: rcdehradun@nios.ac.in | Uttarakhand, Meerut, Bagpat Saharanpur , Muzaffar Nagar, Moradabad and J.P. Nagar (Amroha) districts of U.P. |
| 9. DELHI | National Institute of Open Schooling Regional Centre A-31, Institutional Area, NH-24, Sector-62, NOIDA- 201309 Distt. - Gautam Buddha Nagar (U.P.) Ph: (O) 0120-2404914-15, Fax : 0120-2404916 e-mail: rcdelhi@nios.ac.in | NCT of Delhi and bordering Distts. of NCT in Uttar Pradesh and Haryana comprising of Distts. of Gautam Buddha Nagar (Noida and Greater Noida), Ghaziabad, Gurgaon, Palwal, Faridabad and Jhajjar |
| 10. DHARAMSHALA | National Institute of Open Schooling Regional Centre 2nd Floor, Chamunda Complex, (Near Income Tax Office) Dari Road, Dharamshala, Distt. Kangra-176057, Himachal Pradesh, Ph. (O) 001892-222251 e-mail: rcdharamshala@nios.ac.in | Himachal Pradesh |

| <i>Name of the Region</i> | <i>Address of the Regional Centre</i> | <i>Jurisdiction</i> |
|---------------------------|---|--|
| 11. GANDHINAGAR | National Institute of Open Schooling Regional Centre Multi Storied Building, D Wing, 7th Floor, Sector-11, Near Pathikaashram, Gandhinagar-3820011, Gujarat, Ph.: 079-23220410, Fax: 079-23220411 Email: rcgandhinagar@nios.ac.in | Gujarat |
| 12. GANGTOK | National Institute of Open Schooling Regional Centre Teacher's Guest House, Syari Gangtok - East Sikkim-737102 email: srcgangtok@nios.ac.in | Sikkim and Bordering Dist. of West Bengal Comprising of Distt. Silliguri and Darjling |
| 13. GUWAHATI | National Institute of Open Schooling Regional Centre Building of Assam Publication Board, (Near Assam Board of Secondary Education) 1st Floor, Bamunimaidan, Guwahati-781021 (Assam) Ph. (O): 0361-2650541, 2651201 (Fax) 0361-2650542 e-mail: rcguwahati@nios.ac.in | Nagaland, Arunachal Pradesh, Assam, Manipur, Mizoram and Tripura |
| 14. HYDERABAD | National Institute of Open Schooling Regional Centre IV Floor, Sri Krishna Devaraya, Telugu Basha Nilayam, Trust, No 4-4-8, Sultan Bazar, Hyderabad - 500095. Ph.: (O) 040-24162859, Fax : 040-24060712 | Telangana |
| 15. JAIPUR | National Institute of Open Schooling Regional Centre Sri Krishnan 5-6, Padmavati Colony, Mansarovar Metro Station, Kings Road, Nirman Nagar, Jaipur (Rajasthan) – 302006 Ph.: (O) 0141-2812418, Fax.: 0141-2812519 e-mail: rcjaipur@nios.ac.in | Rajasthan |
| 16. JAMMU | National Institute of Open Schooling Regional Centre, 105, Karan Nagar, Opposite Trikuta Yatri Niwas, Ved Mandir Road, Ambphala, Jammu-180005 rcjammu@nios.ac.in | Jammu and Kashmir |
| 17. KOCHI | National Institute of Open Schooling Regional Centre 6th Floor, Kerala State Housing Board Building, Panampilly Nagar, Kochi-682036 Ph.: 0484-2310032, 4035540 (T/F) 0484-2310033 e-mail: rckochi@nios.ac.in | Kerala |
| 18. KOLKATA | National Institute of Open Schooling Regional Centre CL-18A, Sector-2, Salt Lake City, (Near C.K. Market, Tank No. 9 and Karunamoyee Bus Stand) Kolkata-700 091 (W.B.) Ph.: (O) 033-24797714, Fax : 033-24797707 e-mail: rckolkata@nios.ac.in | West Bengal (Excluding Silliguri and Darjling) and Andaman and Nicobar Island |
| 19. PATNA | National Institute of Open Schooling Regional Centre Lalit Bhawan, Ground Floor, Jawahar Lal Nehru Marg, Bailey Road, Patna - 800001 (Bihar) Ph.: (O) 0612-2545051, 0612-2545470 e-mail: rcpatna@nios.ac.in | Bihar |
| 20. PUNE | National Institute of Open Schooling Regional Centre C/o Indian Institute of Education Campus, 128/2 JP Naik Road, Sriniketan Society, (Near Solaris Club) Kothrud, Pune-411029 (Maharashtra) Ph. (O) 020-25444667, 25439763 (Fax) 020-25456496 e-mail: rcpune@nios.ac.in | Maharashtra, Goa and Daman & Diu |

| <i>Name of the Region</i> | <i>Address of the Regional Centre</i> | <i>Jurisdiction</i> |
|---------------------------|--|---------------------|
| 21. RAIPUR | National Institute of Open Schooling Regional Centre B.T.I Ground, DIET Campus, Shankar Nagar Ph: (O) 0771-2442147, 2442167 Raipur-492001, Chhatisgarh e-mail: chhatisgarh@nios.ac.in | Chhatisgarh |
| 22. RANCHI | National Institute of Open Schooling Regional Centre Schooling, Hostel Premises, Amar Shahid Thakur Vishavanath Shahdev Zila School, Zilla School Parishad, Ranchi Phone No.: 0651-2217030; Fax: 0651-2217060 e-mail: rcranchi@nios.ac.in | Jharkhand |
| 23. VISAKAPATNAM | National Institute of Open Schooling Regional Centre 5th Floor, B Block, VUDA Complex, Siripuram, Visakapatnam, Andhra Pradesh Ph.: 0891-2564584, E-mail : srcvisakhapatnam@nios.ac.in | Andhra Pradesh |
| 24. KOTA | SUB REGIONAL CENTRE | |
| | National Institute of Open Schooling Sub Regional Centre Kota 2nd Floor, 2-PA-1, Vigyan Nagar Main Road, Kota-324005 E-mail : srckota@nios.ac.in Ph. No. 0744-2428555 | |
| 25. DARBHANGA | National Institute of Open Schooling Sub Regional Centre Darbhanga Mohalla Kadirabad, Near Bus Stand (West of Pashu Palan Vibhag) Beside Churi Market Distt. Darbhanga-846004 | |
| 26. SHILLONG | NIOS CELL | |
| | NIOS Cell Shillong Directorate of Educational Research & Training Campus (DERT), Laithumkhram Shillong, Meghalaya-793011 | Meghalaya |
| 27. PORT BLAIR | NIOS Cell Port Blair Adult Education in the Directorate A&N Administration Shiksha Sadan A&N Island, Port Blair | Port Blair |

National Institute of Open Schooling Open Basic Education Programme

TALENT AND VIRTUES

Talent

Poetry, Singing), Dance, Instrumental Music, Acting, Mimicry), Creativity, Painting, Others

Qualities/Virtues

| | |
|--|--|
| 1 Cleanliness | Personal hygiene contributing to the cleanliness of home, neighborhood, school premises, the community in general. |
| 2 Respect for elders & Love For young ones | Being obedient, spirit for service, being humble & helpful as well as showing love and affection for the young ones |
| 3 Co-operation | Co-operation with members of the family, neighbours, fellow learners, disabled, elders |
| 4 Discipline | Being punctual, exercising self control, having a sense of duty. |
| 5 Patriotism | One with the nation in the time of need, always upholding the dignity of the nation, having respect for the national flag, national anthem, national emblem. |
| 6 Tolerance | Listening patiently to the view of others and understanding the same. |
| 7 Courage | Self confidence, eager to do work, hardworking, fearless. |
| 8 Dedication | Faith, dedication to work, loyalty to duty. |
| 9 Gratitude | Gratefulness to anyone who gives something, gratefulness to God. |
| 10 Self-reliance | Capable of doing one's own work independently, seeking less support from others. |
| 11 Sense of Responsibility | Doing one's duty. |
| 12 Orderliness | Keeping one's own things and things around the order. |
| 13 Self-Respect | Respecting and upholding the dignity of self, family.village.state.Nation. |
| 14 Service | Serving the poor, elderly, handicapped, disadvantaged & other. |
| 15 Simplicity | Simplicity in style of living, behavior and thinking. |
| 16 Any other | |

No. F 3-11/2002-EGS-I
Government of India
Ministry of Human Resource Development
Department of Elementary Education & Literacy

New Delhi-110001
11th December 2002

To
Education Secretaries,
All States/UTs

Subject: According recognition to the Examinations at Primary and Middle level Courses conducted by National Institute of Open Schooling (formerly National Open School (NOS)).

Sir,

The National Institute of Open Schooling (N.I.O.S.) (formerly National Open School (NOS)) is an autonomous organization set up the Ministry of Human Resource Development, Government of India, in 1989 as per the Resolution issued vide No. F 6-2/89-Sch. III dated 21.11.1989 to provide education upto pre-degree level to those who for one or the other reason could not make use of the formal education system. N.I.O.S. has also been vested with the authority to conduct and certify examinations for Secondary and Senior Secondary levels by the Government of India as per the resolution issued vide No. F 5-24/90-Sch. III dated 14.9.1990 (copy enclosed).

The Association of Indian Universities (AIU) has also intimated the Registrars of all Indian Universities vide their Notification No. EV /11 (354)91/ dated 25.7.1991 (copy enclosed) of its decision to grant equivalence to N.I.O.S. courses with those of other examinations of recognized Boards for purposes of admission to higher courses of study at Indian Universities.

As you would be aware, the National Institute of Open Schooling (NIOS) also runs Open Basic Education Programmes through Distance Education Mode (Open Learning System) at the Elementary stage and awards Joint Certificate with the partnering NGOs at three levels- A level (equivalent to class III or class II of the Southern States where elementary stage is only till class VII), B level (equivalent to class V /IV) and C level (equivalent to class VIII/VII). This is applicable to their programme of equivalency under distance education programme where similar certificates are provided at the same level of competency and equivalency.

You may like to issue necessary instructions to all concerned to consider certificates issued by N.I.O.S. jointly with partnering NGOs for the above levels as equivalent to concerned stage of education in matters of admissions and employment etc. Formal communication/Notification regarding grant of recognition to the examination conducted by National Institute of Open Schooling may issue and the same widely circulated to all concerned.

For further details / clarifications in the matter, the Chairman, National Institute of Open Schooling may be contacted at N.I.O.S., B-31 B, Kailash Colony, New Delhi-110048 or visit their Website at <http://www.nios.ac.in>.

ours faithfully,

Sd/-
(Amit Kaushik)
Director
Tel No. 23382604

Copy for forwarded for information to :-

1. All the Ministries/Departments of the Govt. of India.
2. All the Officers / Sections in the Deptt. of Elementary Education and Literacy and Department of Secondary and Higher Education.
3. Chairman, National Institute of Open Schooling, B-31 B, Kailash Colony, New Delhi-110048 with reference to his letter No. NIOS/CMOI1-I/02/2607 dated the 10th October 2002

Sd/-
(Amit Kaushik)
Director



National Institute of Open Schooling

ISO 9001 : 2015 Certified

(An autonomous Institution under Ministry of Education, Govt. of India)

A-24-25, Sector-62, NOIDA-201309, Uttar Pradesh