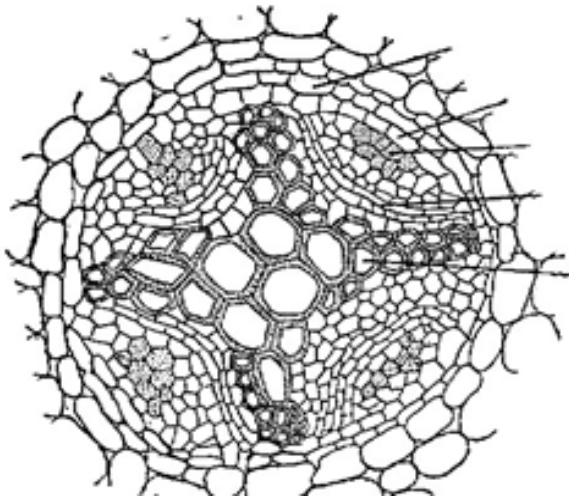


**National Institute of Open Schooling**  
**Lesson 6- Root System**  
**Worksheet-6**

1. How do we prove that tap root system give better support? Explain.
2. Why is it difficult to pluck lateral roots from carrot?
3. Two primary functions of roots are fixation and absorption of water and mineral. Do you think other most important functions which were performed by roots of all plants, if yes, give reasons in support of your answer.
4. Mention four features by which you can say turnip which you eat is a root.
5. Name and describe four regions which can be seen in a longitudinal section of root apex.
6. Level xylem, endodermis, phloem and pericycle in the figure given below. Also mention function of these part?



7. Name and explain the types of modifications of:-
  - a. Extra roots in sugar cane.
  - b. Sucking roots in Cuscuta.
  - c. Respiratory roots in Rhizophora.
  - d. Clinging roots in Orchids.
8. Explain the process in a dicot root which leads to increase in girth.

9. If the number of xylem bundles is 6, how many lateral roots will be grow in that area.  
Give reasons in support of your answer.
10. How water absorbed by the roots reached to other parts of the plants and how the prepared food in the leaves reached the other parts? Explain it with the help of diagram.