

Course Code 336

DATA ENTRY OPERATIONS
Senior Secondary

PRACTICAL MANUAL



NATIONAL INSTITUTE OF OPEN SCHOOLING

(An autonomous organisation under MHRD, Govt. of India)

A-24-25, Institutional Area, Sector-62, NOIDA-201309 (U.P.)

Website: www.nios.ac.in, Toll Free No. 18001809393

CONTENTS

1. Practical 1	1
2. Practical 2	3
3. Practical 3	5
4. Practical 4	7
5. Practical 5	9
6. Practical 6	11
7. Practical 7	13
8. Practical 8	15
9. Practical 9	17
10. Practical 10	19
11. Practical 11	21
12. Practical 12	23
13. Practical 13	25
14. Practical 14	27
15. Practical 15	29
16. Practical 16	31
17. Practical 17	33
18. Practical 18	35
19. Practical 19	37
20. Practical 20	39
21. Practical 21	41
22. Practical 22	43
23. Practical 23	46
24. Practical 24	50
25. Practical 25	52
26. Practical 26	54
27. Practical 27	56
28. Practical 28	58
29. Practical 29	60
30. Practical 30	62

GENERAL INFORMATION AND INSTRUCTIONS

All the information required for doing the practicals is given in this manual. Each practical consists the activity, objectives, software required and procedure. You have to understand the activity first then you can ensure the software required for doing the activity is available in your computer system. All the steps of the practical are enlisted under 'Procedure' along with prerequisite (if any). At the end of the practical activity, you can mark your observation in the prescribed space provided in the manual. Do read all instructions before starting the practical work. Try to take the screen shots/print screen after completing each activity that can be later placed in the practical notebook.

The time allocated for the practical examination is 2 hours and the maximum marks are 60. This examination will not be held with the theory examination but will be conducted separately. During the practical examination you will be expected to bear in mind and observe all the instructions and precautions mentioned in this manual. In the viva you will be asked some questions related to any of the practicals.



Practical 1

Observe the computer system, identify its various parts, segregate them and mention in the table given below:

Hardware	Software

Objectives

After completing this practical you will be able to:

- identify different parts of the computer;
- differentiate between hardware and software.

Software Required

- Any operating system, any word processing software.

Prerequisite

- Knowledge of hardware and software.

Procedure

1. Identify those physical parts of the computer which can be seen and touched like keyboard, mouse, monitor etc., will come under the hardware category.



Notes

2. Identify those programs which run inside the computer's memory to make computer hardware functional like Operating system, writer, games etc., will come under the software category.

Dos and Don'ts

- Observe only external devices.
- Do not go much into the detail of internal components of the CPU.

Learner's Observations

.....

.....

.....

.....

.....

.....

.....

.....

.....

.....

(Instructor's Signature)



Practical 2

Observe the computer system, identify its various parts, segregate them and mention in the table given below:

Input Unit	Output Unit

Objectives

After completing this practical you will be able to:

- identify different parts of the computer;
- list the example of input and output devices.

Software Required

- Any operating system, any word processing software.

Prerequisite

- Knowledge of input and output units.

Procedure

1. Identify those devices through which instruction can be given to the computer's memory, like keyboard, mouse will come under input devices category.



Notes

2. Identify those devices through which output can be shown to the outer world like monitor, printer etc. will come under output devices category.

Dos and Don'ts

- Observe only external devices.
- Do not go much into the detail of internal components of the CPU.

Learner's Observations

.....

.....

.....

.....

.....

.....

.....

.....

.....

.....

.....

(Instructor's Signature)



Practical 3

Try using a speaker/headphone/earphone in the computer system to listen to your favourite music.

Objective

After completing this practical you will be able to use speaker/headphone/earphone and understand the concept of output devices.

Software Required

- Any media player like VLC or Winamp

Prerequisite:

- Knowledge in basic computing skills.

Procedure

1. Ensure that your speaker/headphone/earphone is attached to the right port on the CPU box.
2. Double click on the required music file to be opened in the available media player automatically.
3. Enjoy the music.



Dos and Don'ts

- Different ports are there on the CPU box for mic and speaker/headphone/microphone. Please observe carefully to those ports before plugin the device as there will be symbols engraved near the port in accordance with its purpose.



Notes

- Do not plug in the device in the wrong port as by doing so, you will not be able to hear the sound.

Learner's Observations

.....

.....

.....

.....

.....

.....

.....

.....

.....

.....



Notes

Practical 4

(Instructor's Signature)

Open a program like paint or MS Word or MS Excel in any Windows operating system.

Objectives

After completing this practical you will be able to:

- explore Windows operating system to find the required program;
- open the required program to start working on it.

Software Required

- Windows XP or any higher version

Prerequisite

- Basic knowledge of working in Windows operating system.

Procedure

To start a program follow the steps given below:

1. Click on the Start Button .
2. Click on the All Programs.
3. Point to the desired folder say “**Accessories**” and select the desired program to run such as ‘**Paint**’ or ‘**MS Word**’ or ‘**MS Excel**’.

Dos and Don'ts

- Only open those programs which are required by you.
- Close the programs, once the task is done.



Notes

- Do not open multiple programs unnecessarily as it will slow down the overall processing unnecessarily.

Learner's Observations

.....

.....

.....

.....

.....

.....

.....

.....

.....

.....

.....

(Instructor's Signature)



Practical 5

Create a new folder in “My Documents”.

Objective

After completing this practical you will be able to create various folders as per the requirement.

Software Required

- Windows XP or higher version.

Prerequisite

- Basic knowledge of working in Windows operating system.

Procedure

To create a new folder in ‘My Documents’, follow the steps given below:

1. Click on Start, and then click on My Documents.
2. Under File, click New and select Folder.
3. A new folder is displayed with the default name, New Folder.
4. Type a name for the new folder, and then press ENTER.

Note: A new folder can also be created by right-clicking a blank area in a folder window or on the desktop, pointing to New, and then clicking Folder.

Dos and Don'ts

- Please ensure the location where the folder is being created otherwise it will be tough to locate later on.
- Do not give the same name to different folders as two folders with the same name cannot exist at the same location.



Notes

Learner's Observations

.....

.....

.....

.....

.....

.....

.....

.....

.....

.....

.....

.....

.....

.....

(Instructor's Signature)



Practical 6

Rename the recently created folder in “My Documents”.

Objective

After completing this practical you will be able to change the folder’s name as per your choice.

Software Required

- Windows XP or higher version

Prerequisite

- Basic knowledge of working in Windows XP.

Procedure

To rename a folder, follow the steps given below:

1. Click on Start, and then click on My Documents.
2. Click on the file or folder you want to rename.
3. Under File, click Rename.
4. Type the new name, and then press ENTER key.

Note: File or folder can also be renamed by right-clicking it and then clicking Rename.

Dos and Don’ts

- Try to give some meaningful name to your folders in accordance with the types of files it may store further.
- Do not rename your folders with the system folder’s name like ‘My Documents’ to avoid any unnecessary confusion.



Notes

Learner's Observations

.....

.....

.....

.....

.....

.....

.....

.....

.....

.....

.....

.....

.....

(Instructor's Signature)



Practical 7

Start MS-Word program.

Objective

After completing this practical you will be able to open MS-Word program.

Software Required

- MS-Word

Prerequisite

- Basic knowledge of working in MS-Word

Procedure

There are different ways to start the MS-Word program. One way is using Start button by following the steps given below:

1. Click on the Start button.
2. In the start menu that appears, select All Programs → Microsoft Office → Microsoft Office Word 2007.
3. In a few seconds you will see the Word screen on the monitor.

Dos and Don'ts

- Do remember to close the program when not using.
- Do not open multiple instances of the same program to avoid any unnecessary confusion.



Notes

Learner's Observations

.....

.....

.....

.....

.....

.....

.....

.....

.....

.....

.....

.....

.....

(Instructor's Signature)



Practical 8

Create a new document in MS-Word, write a paragraph on the topic “Covid-19-Precautions”. Save it for future use.

Objectives

After completing this practical you will be able to:

- create a new document in MS-Word;
- write a paragraph on any topic in MS-Word;
- save the document for future use.

Software Required

- MS-Word

Prerequisite

- Knowledge of working in MS-Word.

Procedure

To open a new document, follow one of the following methods:

1. Click the New Document button on the menu bar. 

OR

Press CTRL+N keys on the keyboard.

2. A blank document will appear on the screen.
3. Start typing paragraphs on the given topic.
4. Once done typing, save and close the document by following the steps as given below:



Notes

5. Click the Save button on the menu bar. 

OR

Press CTRL+S keys on the keyboard.

It will prompt you by opening the “**Save As**” dialog box. Select the folder where you want to place your document in **Save In:** box, type the name of the document in **File Name:** box, and then click OK.

Your file will be saved with the name as given by you.

Dos and Don'ts

- Do remember to keep saving your document at a regular interval.
- Do not save your document with any irrelevant name as it may be tough for you to recall that name in future. So it's always advisable to give your document a relevant name in accordance with the topic.

Learner's Observations

.....

.....

.....

.....

.....

.....

.....

.....

.....

.....

.....

.....

(Instructor's Signature)



Practical 9

Protect your recently created document with some secret password.

Objective

After completing this practical you will be able to protect your document in MS-Word.

Software Required

- MS-Word

Prerequisite

- Basic knowledge of working in MS-Word

Procedure

To protect a document from other users accessing it, we may give a password to the document by following the steps as given below:

1. When the file is open, select Office Button→Save As command on the menu bar.

The Save As dialog box appears.

2. Move the cursor on the Tools tab on the down left side of Save As dialog box and click.
3. Click on General Options. The “**Save**” dialog box opens.

You will see two boxes: “**Password to open**” and “**Password to modify**”.

4. Type a password in the “**Password to open**” box. (A password can include up to 15 character case-sensitive letters, numerals, spaces and symbols. As you type the password, Word displays an asterisk (*) for each character you type.)



Notes

5. Click OK.
6. The Confirm Password dialog box appears. Retype the password you typed earlier. Click OK on Confirm Password dialog box and then click OK on Save dialog box and then click OK on **Save As** dialog box.

Note: When you open the file again next time it will ask you to type the password.

Dos and Don'ts

- Do remember that the passwords are case sensitive; that is, 'XYZ' and 'xyz' are two different passwords.
- Do not give any irrelevant password as it may be tough for you to recall that in future and you will not be able to open that file without the password. So it's always advisable to give your document a relevant name in accordance with the topic.

Learner's Observations

.....

.....

.....

.....

.....

.....

.....

.....

.....

.....

.....

(Instructor's Signature)



Practical 10

Find Documents.

Objective

After completing this practical you will be able to find the document.

Software Required:

- MS-Word

Prerequisite

- Basic knowledge of working in MS-Word.

Procedure

1. Select Office Button Open command on the menu bar. The Open dialog box will be displayed.
2. In **Look in:** box, select the folder or click where you suspect your file will be located.
3. Type a few letters you remember that match with the file name in **File Name:** box.

If the typed letters are beginning letters of your file name, the file name will appear in the **File Name:** box.

4. Select the desired file and click on the Open button to open the document.
(Remember you can type uppercase or lowercase letters, since search is not case sensitive).

Dos and Don'ts

- Do try to remember the location of the file while saving as it will help you during file search.



Notes

- As search is not case sensitive so do not bother to type file names in the correct case.

Learner's Observations

.....

.....

.....

.....

.....

.....

.....

.....

.....

.....

.....

(Instructor's Signature)



Practical 11

Printing the document.

Objective

After completing this practical you will be able to take printouts of the document.

Software Required

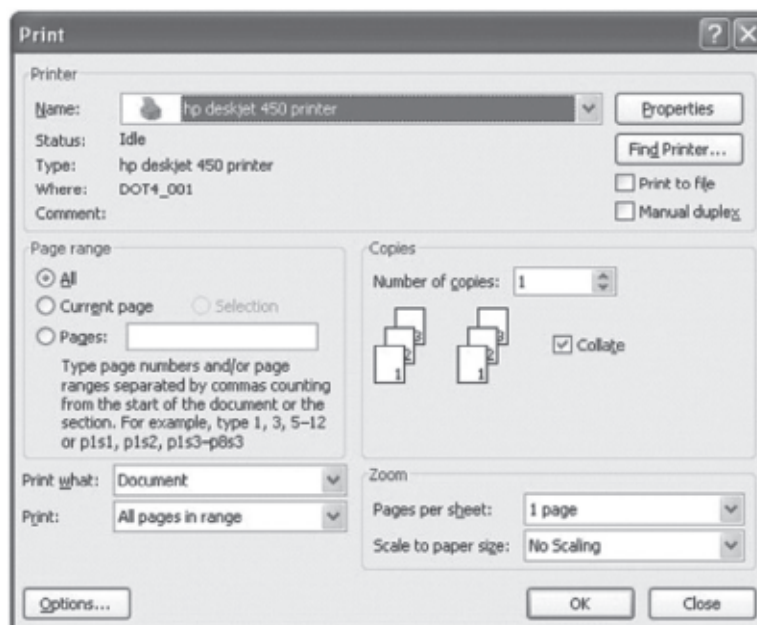
- MS-Word

Prerequisite

- Basic knowledge of working in MS-Word.

Procedure

To print a document or selected pages follow the steps given below:





Notes

1. Open the document to be printed.
2. Choose Office Button → Print command on the menu bar.
3. The Print dialog box will open as shown in the figure given here:
Select the Options like print range, Number of copies, Printer name etc.
4. Click OK.

Dos and Don'ts

- Do remember to check that the printer is switched on and the paper is available in the printer tray.
- Do not try to forcefully pull the paper and wait for the printer to eject the paper automatically once printing is done.

Learner's Observations

.....

.....

.....

.....

.....

.....

.....

.....

.....

.....

.....

(Instructor's Signature)



Practical 12

Open any existing document.

Objective

After completing this practical you will be able to open the existing document.

Software Required

- MS-Word

Prerequisite

- Knowledge of working in MS-Word.

Procedure

Click on the office 2007 button at the top left corner of your screen to open an existing document, follow one of the following methods:

1. Click the Open File button on the menu bar.

OR

Press CTRL+O keys on the keyboard.

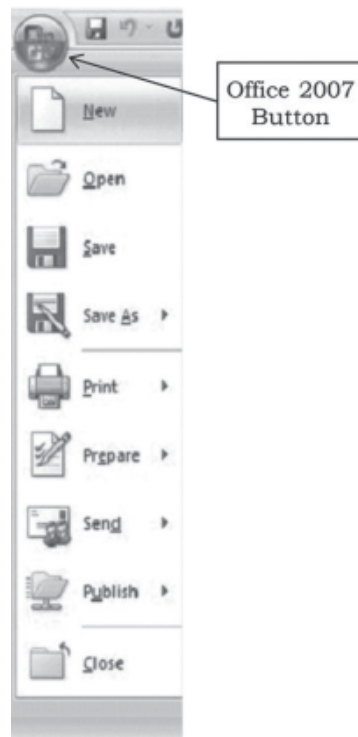
Each of the above methods will show the Open dialog box.

2. Choose the file and click the Open button.

Required file will be opened up on the screen.

Dos and Don'ts

- Do remember to close the file once the task is done.





Notes

- Do not open multiple documents unnecessarily as it will slow down the overall processing.

Learner's Observations

.....

.....

.....

.....

.....

.....

.....

.....

.....

.....

.....

(Instructor's Signature)



Practical 13

Format the document with suitable formatting styles, such as document's text in red color, and text size 14.

Objective

After completing this practical you will be able to format the document.

Software Required

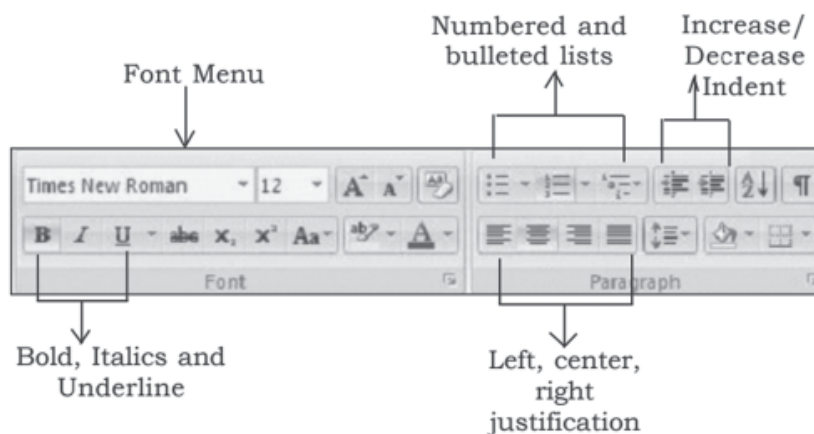
- MS-Word

Prerequisite

- Knowledge of working in MS-Word.

Procedure

Using the Formatting toolbar is the easiest way to change many attributes of text. If the toolbar as shown below is not displayed on the screen, select Home Tab. Under Home Tab you can select the desired Formatting commands under Font, Paragraph subtask menu and follow the steps as given below:





Notes

1. Select the text on which formatting needs to be applied by any of the below given options:
 - To select the entire document: choose Edit → Select All command on the menu bar, or press CTRL+A keys.
OR
 - Drag the mouse over the words, or hold down SHIFT key while using the arrow keys.
2. Choose the required font size i.e., 14 from the “**Font Size**” box and desired text color i.e., red from the “**Text Color**” box.
3. Click anywhere outside the selection area.

You will observe that required formatting style has been applied on the document.

Dos and Don'ts

- Do remember to select the text before applying any formatting styles.
- Do not apply multiple styles altogether on the same text unnecessarily as instead of making the text attractive, it may end up spoiling the overall impact of the document.

Learner's Observations

.....

.....

.....

.....

.....

.....

.....

.....

.....

.....

(Instructor's Signature)



Practical 14

Create some bulleted or numbered list in the document.

Objective

After completing this practical you will be able to create some bulleted or numbered lists in the document.

Software Required



- MS-Word

Prerequisite

- Basic knowledge of working in MS-Word.

Procedure

To create a bulleted or numbered list, use the list features available in MS-Word by following the steps given below:

1. Click the Bulleted List button  or Numbered List button  on the formatting toolbar.
2. Type the first entry and press ENTER. This will create a new bullet or number on the next line. If you want to start a new line without adding another bullet or number, hold down the SHIFT key while pressing ENTER.
3. Continue to type entries and press ENTER twice when you are finished typing to end the list.

Dos and Don'ts

- Use the Increase Indent and Decrease Indent buttons on the formatting toolbar to create lists of multiple levels.



Notes

- Do not press multiple enter keys if you wish to continue lists as by pressing twice enter key may disturb the list continuity.

Learner's Observations

.....

.....

.....

.....

.....

.....

.....

.....

.....

.....

.....

(Instructor's Signature)



Practical 15

Design a single invitation letter for your birthday party in MS-Word and add name and address of multiple friends of yours (recipients) with the help of mail merge feature.

Objective

After completing this practical you will be able to use the mail merge feature of MS-Word.

Software Required

- MS-Word

Prerequisite

- Knowledge of Mail merge feature of MS-Word.

Procedure

1. To use mail merge feature, MS-Word provides a wizard.
2. To use Mail Merge Wizard, select Mailings → Start Mail Merge subtask from the main tab bar.
3. Then select Step by Step Mail Merge Wizard option on the subtask bar.
4. The Mail Merge Wizard menu will appear on the screen. This will help you to create mail merge documents in customised step manner.
5. The Wizard has 6 steps to create a mail merge document. Those are:

Step 1: Select Document Type, i.e., “Letters” and click on the Text: “**Next: Starting Document**” located on the lower end of the Wizard dialog box to move to the next step.

Step 2: The next step in the process is to select starting document under Letters option. There are three options available: Use the current document,



Notes

Start from a template, Start from existing document. Select any one option out of the three options and click on the Text: **“Next: Select recipients”** located on the lower end of the Wizard dialog box to move to the next step.

Step 3: The next step in Mail Merge Wizard is to select a list of recipients or address to whom the drafted letter will be addressed and dispatch.

Step 4: Select any one option out of the three options and click on the Text: **“Next: Write your letter”** located on the lower end of the Wizard dialog box to move to the next step.

Once you have created your main document and data source document, the next two steps in mail merge are to insert merge fields in the main document and then merge data in the main document.

Dos and Don’ts

- Do create the main document and recipient list before hand to avoid any unnecessary hassle while merging the document.
- Do not add unnecessary fields while creating recipient list to avoid unnecessary confusion.

Learner’s Observations

.....

.....

.....

.....

.....

.....

.....

.....

.....

.....

.....

.....

.....

.....

.....

.....

.....

.....

.....

.....

.....

(Instructor’s Signature)



Practical 16

Anvesha is conducting a fundraiser for a blind school. In view of the pandemic, she has urged people to pay her through an online payment site, for her own records she wants to organize the data obtained from the site in a spreadsheet. Implement the following questions in MS Excel.

Organize and Store the following data in a spreadsheet.

Payment ID : P 101, P 102, P 103, P 104

Transaction Date: 10-03-2021, 11-03-2021, 11-03-2021, 11-03-2021

Transaction Type: NEFT, Debit Card, Credit Card, BHIM UPI

Invoicenumber : Inv 121, Inv122, Inv 123, Inv 124

Buyer Name : Mehak, Aseem, Gurpreet, Daisy

Buyer Email Address : mehak@mymail.co.in, aseem@mymail.co.in, gurpreet@yourmail.co.in, daisy@mymail.co.in

Buyer Contact Number : 7325236542, 5621457859, 3589654712, 8575858585

Quantity Sold : 5, 3, 6, 9

Objectives:

After completing this practical you will be able to:

- arrange given data in tabular format;
- use Excel to store data in a worksheet.

Software Required:

- MS Excel


Pre-requisite

- Knowledge of using tabular format for organizing and storing data.
- Basic understanding of Spreadsheet as a tool to store data in a tabular format.



Notes

Procedure

1. Start MS Excel by clicking on Start → All Programs → Microsoft Office → Microsoft Excel
 or
 Press  + r and type excel
2. Choose Blank Workbook
3. Enter the data as shown below:

	A	B	C	D	E	F	G	H	I
1	Payment ID	Transaction Date	Transaction Type	Invoice number	Buyer Name	Buyer Email Address	Buyer Contact Number	Quantity Sold	Ticket per person
2	P 101	10-03-2021	NEFT	Inv 121	Mehak	mehak@mymail.co.in	7325236542	5	525
3	P 102	11-03-2021	Debit Card	Inv122	Aseem	aseem@mymail.co.in	5621457859	3	525
4	P 103	11-03-2021	Credit Card	Inv 123	Gurpreet	gurpreet@yourmail.co.in	3589654712	6	425
5	P 104	11-03-2021	BHIM UPI	Inv 124	Daisy	daisy@mymail.co.in	8575858585	9	300

Dos and Don'ts

- Start Entering data from cell A1.
- Make sure you enter the data under the correct heading.
- Don't forget to save your work.

Learner's Observations

.....

.....

.....

.....

.....

.....

.....

.....

.....

.....

.....

.....

.....

.....

.....

.....

.....

.....

.....

.....

(Instructor's Signature)



Practical 17

Use the spreadsheet created in Practical 16 to locate the name Aseem and correct its spelling by replacing it with Asim and also rename the worksheet to “PayDetails”.

Objectives

After completing this practical you will be able to:

- use the find feature to find the content;
- use replace feature to quickly make corrections or desired changes.


Software Required

- MS Excel

Pre-requisite

- Knowledge of how to start Excel and Open the required worksheet.
- Start MS Excel by clicking on Start → All Programs → Microsoft Office → Microsoft Excel

or

Press  + r and type excel

Procedure

1. Start Excel by following the steps suggested in prerequisites.
2. Open the already created worksheet.
3. Choose Find → Replace option from the Home Tab.
4. In the Find and replace dialog type the text to be found, in this case Aseem.
5. In Replace text, type the text that needs to replace Aseem, in this case Asim.

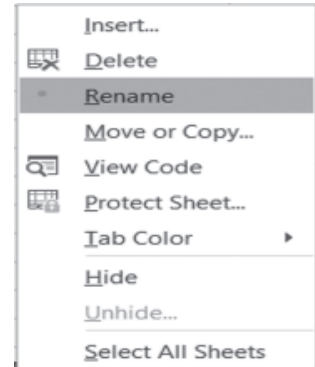


Notes

- 6. You can inspect the occurrences one by one by choosing Find Next and in one go by choosing Find All.
- 7. To replace all the occurrences of Aseem, choose Replace All.

To rename the worksheet

- 8. Right click the sheet tab of the worksheet.
- 9. Choose Rename.
- 10. Enter the desired name in this case “PayDetails”.



Dos and Don'ts

- Be curious by trying the feature with different text as well.
- Don't forget to save your work.

Learner's Observations

.....

.....

.....

.....

.....

.....

.....

.....

.....

.....

.....

.....

(Instructor's Signature)



Practical 18

To the worksheet created in Practical 15, add a header comprising the name of Anvesha's initiative "Fundraiser for Blind School", add a footer comprising "Page number" and change the orientation of the worksheet to landscape.

Objectives

After completing this practical you will be able to:

- set header and footer that occurs on each page of the worksheet at the time of taking out a hardcopy (Printout);
- change the orientation of the worksheet.


Software Required

- MS Excel

Pre-requisite

- Knowledge of how to start Excel and Open the required worksheet.
- Start MS Excel by clicking on Start → All Programs → Microsoft Office → Microsoft Excel

or

Press  + r and type excel

Procedure

1. Choose the Page layout Tab.
2. Select Header and Type the Header text "*Fundraiser for Blind School*".
3. Select "Go to Footer" and insert Page number.
4. To change the orientation of the worksheet, from the Page layout Tab, choose Orientation then select Landscape.



Notes

Dos and Don'ts

- Be curious by trying the feature with different text as well.
- Don't forget to save your work.

Learner's Observations

.....

.....

.....

.....

.....

.....

.....

.....

.....

.....

.....

(Instructor's Signature)



Practical 19

Style the following sheet providing the population for the seven continents and their area, density and contribution to world population in percentage by creating a New Style named “MyStyle” with specifications as shown in figure 2.

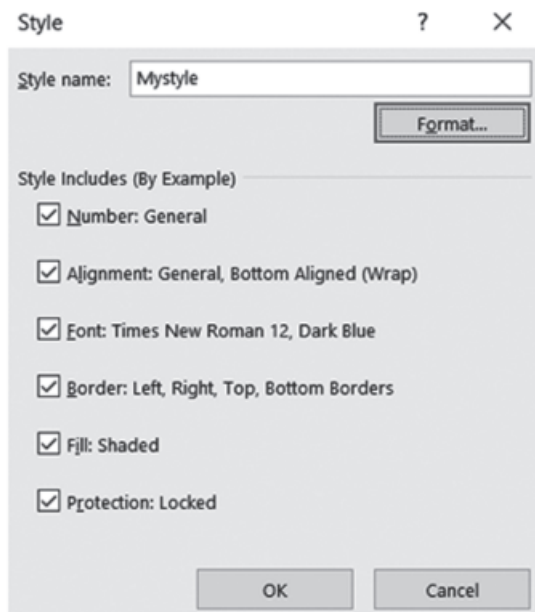


Figure 1

#	Continent	Population	Area	Density	World Population
		-2020	(Km ²)	(P/Km ²)	Share
1	Asia	4,64,10,54,775	3,10,33,131	150	59.54%
2	Africa	1,34,05,98,147	2,96,48,481	45	17.20%
3	Europe	74,76,36,026	2,21,34,900	34	9.59%
4	North America	59,20,72,212	2,13,30,000	28	7.60%
5	South America	43,07,59,766	1,74,61,112	25	5.53%
6	Australia/Oceania	4,31,11,704	84,86,460	5	0.55%
7	Antarctica	0	1,37,20,000	0	0.00%

Figure 2

Source: <https://www.worldometers.info/geography/7-continent/>



Notes

Procedure

1. Create your style by choosing Cell Style → New Style.
2. Give name of the style as “MyStyle”.
3. Click on Format and choose the options from the tabs as shown in Figure 2.
4. Click Ok.
5. For applying style tour sheet data, first select the cells containing data and then choose Home → Cell Style → MyStyle.
6. The Cells are formatted as per the style chosen by you in step 3.

Dos and Don'ts

- Remember the password that you have set for the worksheet.
- In order to edit the protected sheet don't forget to unprotect it by choosing Unprotect sheet from Format cells group.
- Don't forget to save your work.

Learner's Observations

.....

.....

.....

.....

.....

.....

.....

.....

.....

.....

.....

(Instructor's Signature)



Practical 20

Create a spreadsheet as shown below:

	A	B	C	D	E	F	G
1	Name	Date	State/UT	Name of the Vaccine	Number of registrations	Number of people vaccinated	Cost incurred
2							
3							
4							

Ensure the following using Format cell option for the above created worksheet:

- Horizontal Text alignment of data in Column A, D, E, F should be center and in case the data exceeds the cell width, it should be wrapped.
- Date in Column B should be displayed in DD-MM-YYYY format.
- Data in Column G shall precede with the symbol of ₹ Rupees.

Objectives

After completing this practical you will be able to set formatting option to ensure data is entered in a proper format.

Software Required

- MS Excel

Pre-requisite

- Knowledge of how to start Excel and Open the required worksheet.

Start MS Excel by clicking on Start → All Programs → Microsoft Office → Microsoft Excel

or

Press  + r and type excel.



Notes

Procedure

1. Start Excel by following the steps suggested in prerequisites.
2. Create a new spreadsheet with the headings.
3. Select the column A, D, E, F one by one and select Text Alignment Horizontal as Center and from Text Control option select Wrap Text.
4. Select Column B from the Number Tab choose Date and from the Type options choose a date format that is written in DD-MM-YYYY format.
5. Select Column G from the Number tab choose currency.

Dos and Don'ts

- Make sure you select the column name as (A, B, C,..). It ensures the full column is selected.
- Don't forget to save your work.

Learner's Observations

.....

.....

.....

.....

.....

.....

.....

.....

.....

.....

.....

(Instructor's Signature)



Practical 21

Protect the worksheet created in the practical 20 to ensure that there is no unauthorized editing.

Objectives

After completing this practical you will be able to set password to a worksheet to ensure security.

Software Required


- MS Excel

Pre-requisite

- Knowledge of starting Excel

Start MS Excel by clicking on Start → All Programs → Microsoft Office → Microsoft Excel

or

Press  + r and type excel

- A worksheet containing data.

Procedure

- Select Home tab.
- Click Format in cells group.
- Choose Protect Sheet from Drop Down menu. Enter Password to protect the sheet.
- Select the options from the list provided that you want to prevent any unauthorized users to use or access.



Notes

Dos and Don'ts

- Remember the password that you have set for the worksheet.
- In order to edit the protected sheet don't forget to unprotect it by choosing Unprotect sheet from Format cells group.
- Don't forget to save your work.

Learner's Observations

.....

.....

.....

.....

.....

.....

.....

.....

.....

.....

.....

(Instructor's Signature)



Practical 22

Bashir recognizes the importance of forest in the overall prosperity of mankind. He downloaded data from Open Government Data website data.gov.in. Here is the snapshot.

	A	B	C	D	E	F	G	H
1	States/Uts	Area	RFA as - reports	RFA (as revised b	RFA (as revised by SFD	RFA (as revised by SFDs) - Uni	Total - RFA	% of GA
2	Andhra Pradesh	275069	63814	50479	12365	970	63814	
3	Arunachal Pradesh	83743	51540	10723	9779	31039	51541	
4	Assam	78,438	26,832	17,864	0	8,968	26,832	
5	Bihar	94,163	6,473	693	5,779	1	6,473	
6	Chhattisgarh	1,35,191	59,772	25,782	24,036	9,954	59,772	
7	Delhi	1,483	85	78	7	0	85	
8	Goa	3,702	1,224	253	0	972	1,225	
9	Gujarat	1,96,022	18,927	14,373	2,886	4,388	21,647	
10	Haryana	44,212	1,559	249	1,158	152	1,559	
11	Himachal Pradesh	55,673	37,033	1,898	33,130	2,005	37,033	
12	Jammu and Kashmir	2,22,236	20,230	17,643	2,551	36	20,230	
13	Jharkhand	79,714	23,605	4,387	19,185	33	23,605	
14	Karnataka	1,91,791	38,284	28,690	3,931	5,663	38,284	
15	Kerala	38,863	11,265	11,309	0	0	11,309	
16	Madhya Pradesh	3,08,245	94,689	61,886	31,098	1,705	94,689	
17	Maharashtra	3,07,713	61,939	51,548	6,727	3,082	61,357	
18	Manipur	22,327	17,418	1,467	4,171	11,780	17,418	
19	Meghalaya	22,429	9,496	1,113	12	8,371	9,496	
20	Mizoram	21,081	16,717	7,909	3,568	5,240	16,717	
21	Nagaland	16,579	9,222	86	508	8,628	9,222	
22	Odisha	1,55,707	58,136	26,329	15,525	16,282	58,136	
23	Punjab	50,362	3,084	44	1,137	1,903	3,084	
24	Rajasthan	3,42,239	32,639	12,475	18,217	2,045	32,737	
25	Sikkim	7,096	5,841	5,452	389	0	5,841	
26	Tamil Nadu	1,30,058	22,877	19,388	2,183	1,306	22,877	
27	Tripura	10,486	6,294	4,175	2	2,117	6,294	
28	Uttar Pradesh	2,40,928	16,583	11,660	1,420	3,503	16,583	
29	Uttarakhand	53,483	34,651	24,643	9,885	123	34,651	

Figure 1

Source: https://data.gov.in/catalog/recorded-forest-area-states-and-uts?filters5Bfield_catalog_reference%5D=90712&format=json&offset=0&limit=6&sort%5Bcreated%5D=desc

or you can create your own sheet using the data shown above.

Bashir had by mistake erased the data in the column “% of GA”. Help him recalculate the data in this column using the formula: $(RFA \text{ as - reported in ISFR } 2011 / \text{Area}) * 100$. Also ensure the result is displayed to only 1 decimal place. Note: RFA stands for Reserved Forest Area and GA stands for General Availability.



Notes

Objectives

After completing this practical you will be able to:

- set an upper limit to the number of decimal places to be displayed;
- identify the cell addresses to be used in a formula;
- create and apply formula to make quick calculations;
- use the fill handle option to apply formula to the subsequent cells.

Software Required


- MS Excel

Pre-requisite

- Knowledge of starting Excel.

Start MS Excel by clicking on Start → All Programs → Microsoft Office → Microsoft Excel

or

Press  + r and type excel.

- A worksheet containing data.

Procedure

To display the result to 1 decimal place

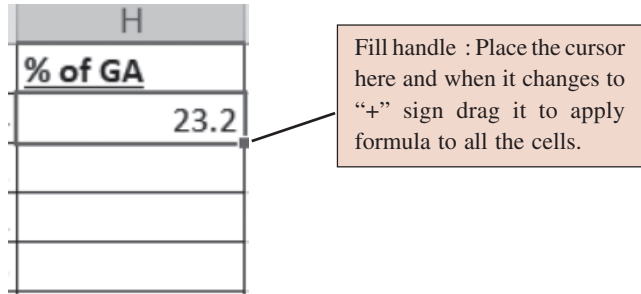
1. Select the column containing “% of GA”, it is column H as shown in figure 1.
2. Choose Home Tab → Format → Format Cells
3. Select Number Tab and set Decimal places option to 1.
4. Identify the Cell address of the first cell containing.

To calculate “% of GA”

5. Identify the first cell containing the “RFA as - reported in ISFR 2011” which is C2 as shown in figure 1.
6. Identify the first cell containing the Area which is B2 as shown in figure 1.



7. Click on the first cell to store “% of GA” which is H2 as shown in figure 1.
8. In cell H2, Type the formula = (C2/B2)*100 and press enter.
9. Use fill handle to drag the formula to all the cells.



Dos and Don'ts

- Remember that formula always starts with =.
- Drag to apply the formula to other cells only when the cursor changes to “+”.
- Don't forget to save your work.

Learner's Observations

.....

.....

.....

.....

.....

.....

.....

.....

.....

.....

.....

(Instructor's Signature)



Practical 23

Help Bashir to generate the following statistical summary of the data given in practical 22 to better understand the data pertaining to forest area in the Indian states and UTs.

Average Reserved Forest Area as reported in ISFR -2011 in cell J3.

Sum of RFA (as revised by SFDs) - Protected Forests in cell J4.

Count of Protected Forest Area only if the value is greater than 0 in cell J5.

Maximum Area of Reserved Forest Area in cell J6.

Minimum Area of Reserved Forest Area in cell J7.

Objective

After completing this practical you will be able to apply functions to statistically summarize the data.

Software Required:


- MS Excel

Pre-requisite

- Knowledge of starting Excel.

Start MS Excel by clicking on Start → All Programs → Microsoft Office → Microsoft Excel

or

Press  + r and type excel

- A worksheet containing data.

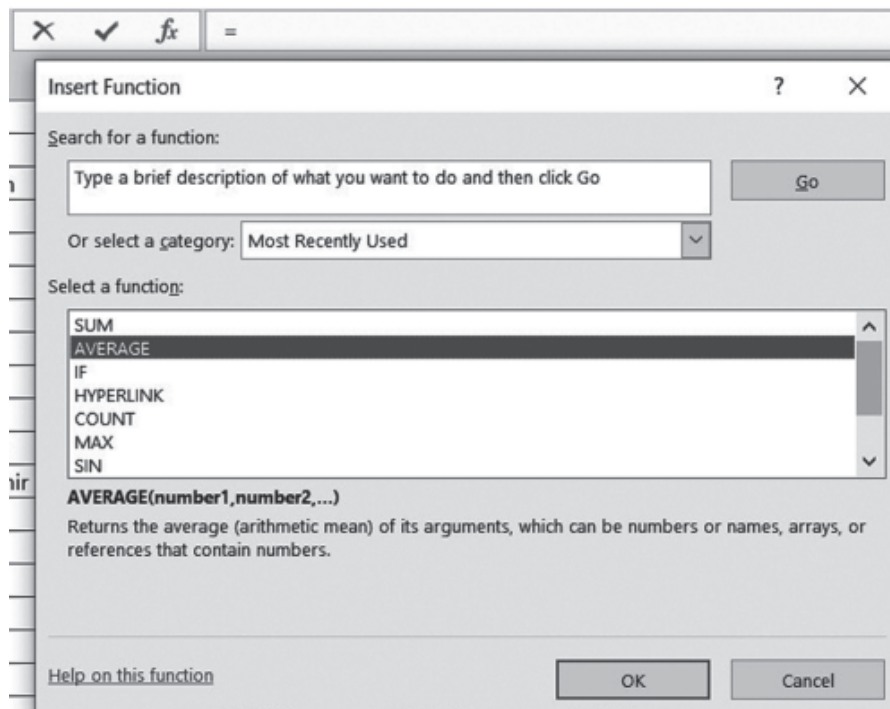


Procedure

1. Identify the cell range on which you want to apply the function, in this case
 - (a) C2 : C29 stores Reserved Forest Area as reported in ISFR - 2011
 - (b) E2 : E29 stores RFA (as revised by SFDs) - Protected Forests

To find Average Reserved Forest Area as reported in ISFR-2011 in cell J3.

2. Click on cell J3 (where you want to display your result).
3. Invoke the function dialog by clicking on the f_x icon on the formula bar.



4. Select Average.
5. Press OK.
6. Enter the Cell range (C2 : C29).
7. Press Ok.
8. Similarly, calculate Sum of RFA (as revised by SFDs) - Protected Forests (J4),
Maximum Area of RFA(J6), Minimum Area of RFA (J7)



Notes

To calculate the Count of Protected Forest Area only if the value is greater than 0.

1. Click on cell J5 (where you want to display your result).
2. Invoke the function dialog by clicking on the f_x icon on the formula bar.
3. Select COUNTIF if not available in the list you can search it in the search box.
4. Press OK.
5. Enter the Cell range (E2:E29) and criteria as >0
6. Press OK.

Function Arguments

COUNTIF

Range: E2:E29 = {12365;9779;0;5779;24036;7;0;2886;1158;33130;25}

Criteria: >0 =

Counts the number of cells within a range that meet the given condition.

Criteria is the condition in the form of a number, expression, or text that defines which cells will be counted.

Formula result =

[Help on this function](#) OK Cancel

Dos and Don'ts

- Give appropriate heading to all the calculations you are performing such as:
 - Average of RSA (I3)
 - Sum of RSA(I4)
 - Count of RSA (I5)
 - Maximum of RSA (I6)
 - Minimum of RSA (I7)
- Don't forget to save your work.



Learner's Observations

Notes

.....

.....

.....

.....

.....

.....

.....

.....

.....

.....

.....

.....

(Instructor's Signature)



Practical 24

Represent the following data graphically for conveying information effectively.

Use 2D column chart to show State wise Area and find out which is the largest state of India in terms of Area.

Use Bar chart to show State, RFA as - reported in ISFR 2011, RFA (as revised by SFDs) - Protected Forests and compare which state has more number of Protected Forests.

Objectives

After completing this practical you will be able to:

- use charts to graphically represent data;
- identify the elements of a chart.


Software Required

- MS Excel

Pre-requisite

- Knowledge of how to start Excel and Open the required worksheet.
- Start MS Excel by clicking on Start → All Programs → Microsoft Office → Microsoft Excel

or

Press  + r and type excel

Procedure

1. Start Excel by following the steps suggested in prerequisites.
2. Open the already created worksheet.



Notes

Making a 2D column chart for State Vs Area

3. Select the data corresponding to the columns State and Area.
4. Click on the Insert → Chart.
5. Choose 2D Column chart.
6. Specify title as Area wise State.

Use Bar chart to show:

7. Hide the columns B, D.
8. Select the data of columns A, C and E.
9. Click on Insert → Chart.
10. Choose Bar Chart.
11. Specify Title as Forest Cover of states.

Dos and Don'ts

- Always give an informative title.
- Be curious by trying the different types and options of chart.
- See how different charts represent your data and analyse which type of chart should be used for what kind of data.
- Don't forget to save your work.

Learner's Observations

.....

.....

.....

.....

.....

.....

.....

.....

(Instructor's Signature)



Practical 25

Social Networking is a boon and bane!

Research on how social networking can help people and also what negative impact it might have on people of different age groups. Plan a presentation that showcases your research and findings. Use Title Slide. Add bullets and numbering to showcase information in points.

Objectives

After completing this practical you will be able to:

- refine information gathered for ensuring a crisp presentation;
- use appropriate font face, size and colours to ensure readability;
- create a presentation using PowerPoint.

Software Required

- MS PowerPoint

Pre-requisite

- Knowledge of how to start PowerPoint.

Start MS PowerPoint by clicking on Start → All Programs → Microsoft Office → Microsoft PowerPoint

Procedure

- Start MS PowerPoint.
- Choose New and Select a Blank Presentation or any other template that you find appropriate for creating your presentation.
- Give title to your presentation.



- Represent the information preferably as bullet points. You can choose Bullets and numbering from the Home Tab.

Dos and Don'ts

- Give appropriate heading to your presentation.
- Mention the source from where you have collected the information to make your presentation authentic.
- Use a font size and face that is easy to read.
- Get your presentation reviewed by taking views of your family members and friends.
- Never use dark colour for text on a dark coloured background.
- Don't forget to save your file.

Learner's Observations

.....

.....

.....

.....

.....

.....

.....

.....

.....

.....

.....

(Instructor's Signature)



Practical 26

Read the following text carefully and represent this information using the Smart Art feature of MS Powerpoint.

The supreme court is the highest court of the country established by the Constitution. The Constitution states that the Supreme Court is a federal court, guardian of the Constitution, and the highest court of appeal.

There are 25 High Courts at the state level. Article 141 of the Constitution of India mandates that they are bound by the judgements and orders of the Supreme Court of India by precedence. These courts have jurisdiction over a state, a union territory or a group of states and union territories. Below the High Courts are a hierarchy of subordinate courts, such as the civil courts, family courts, criminal courts, and various other district courts.

Source: https://en.wikipedia.org/wiki/Judiciary_of_India

Objectives

After completing this practical you will be able to:

- visualize text in the form of hierarchy or process;
- use smart art feature.

Software Required

- MS PowerPoint

Pre-requisite

- Knowledge of how to start PowerPoint.

Start MS Powerpoint by clicking on Start → All Programs → Microsoft Office → Microsoft Powerpoint



Notes

Procedure

1. Identify how you want to represent the paragraph given above.
2. Choose Insert → Smart Art then, decide how you want to represent the concept.
3. Select the desire smart art.
4. Fill in the content.
5. Use colour scheme of your choice.

Dos and Don'ts

- Give appropriate heading to your presentation.
- Use a font size and face that is easy to read.
- Get your presentation reviewed by taking views of your family members and friends.
- Never use dark colour for text on a dark coloured background.
- Don't forget to save your file.

Learner's Observations

.....

.....

.....

.....

.....

.....

.....

.....

.....

.....

.....

(Instructor's Signature)



Practical 27

Collect information about vaccination such as:

- What is Vaccination?
- Why is it important?
- How does Vaccine prepare the human body?
- As a toddler what are the basic vaccines that are mandatory?

Also, collect interesting images (make sure you write the source of the image). Prepare a presentation using the information and images. After creating the presentation save it as a webpage and see how it looks in a web browser.

Objectives

After completing this practical you will be able to:

- create a presentation and save it as a web page;
- view the saved webpage in a browser.

Software Required

- MS PowerPoint

Pre-requisite

- Knowledge of how to start PowerPoint.

Start MS Powerpoint by clicking on Start → All Programs → Microsoft Office → Microsoft Powerpoint

Procedure

1. Create a presentation including all the information gathered.



Notes

2. Insert images by using Insert → Picture option.
3. Save your presentation as a web page by selecting Office → Save As and select web page option.
4. Double click the presentation you saved as a web page; it will open in your web browser.

Dos and Don'ts

- Give appropriate heading to your presentation.
- Use a font size and face that is easy to read.
- Get your presentation reviewed by taking views of your family members and friends.
- Make sure you give credits to the source of information and images used in your presentation.
- Never use dark colour for text on a dark-coloured background.
- Forget to save your file.

Learner's Observations

.....

.....

.....

.....

.....

.....

.....

.....

.....

.....

.....

(Instructor's Signature)



Practical 28

Create an email id and send email to your friends asking for her/his wellness in this pandemic. Also, explore the Cc and Bcc option.

Objectives

After completing this practical you will be able to:

- create an email id;
- use the option Cc and Bcc effectively.

Software Required

- Web browser and an Email service provider such as gmail.com, outlook etc.

Pre-requisite

- The system should be connected to Internet.
- A web browser should be installed.
- Email ids of friends to whom you want to send mail.

Procedure

1. Open the web browser.
2. Use any of the email service provider to create your mail id.
3. Send email to your friends.
4. Write a few email addresses in Cc and a few in Bcc.
5. Check Sent folder to analyze how the mails will be delivered to your friends.



Notes

Dos and Don'ts

- Be polite in your language.
- Always write subject for the mail.
- Never share your email password with anyone.
- Never open and download mail/attachments from unknown sender.

Learner's Observations

.....

.....

.....

.....

.....

.....

.....

.....

.....

.....

.....

(Instructor's Signature)



Practical 29

Explore the setting options of the email service provider. Is it possible to have a signature? If yes, create a signature for yourself.

Objectives

After completing this practical you will be able to:

- create an email id;
- use email settings option.

Software Required

- Web browser and an Email service provider such as gmail.com, outlook etc.

Pre-requisite

- The system should be connected to Internet.
- A web browser should be installed.
- Email ids of friends to whom you want to send mail.

Procedure

1. Open the web browser.
2. Log in to your email id.
3. Search for “**Settings**” option.
4. Create a Signature.
5. Choose compose option of a mail and see how the signature is displayed.



Notes

Dos and Don'ts

- Be polite in your language.
- Always write subject for the mail.
- Never share your email password with anyone.
- Never open and download mail/attachments from unknown sender.

Learner's Observations

.....

.....

.....

.....

.....

.....

.....

.....

.....

.....

.....

(Instructor's Signature)



Practical 30

Explore the setting options of the web browser and find out if there is an option to change the language, Save site addresses to access later or Clear History.

Objectives

After completing this practical you will be able to get acquainted with your browser.

Software Required:

- Web browser and an Email service provider such as gmail.com, outlook etc.

Pre-requisite

- The system should be connected to Internet.
- A web browser should be installed.
- Email ids of friends to whom you want to send mail.

Procedure

1. Open the web browser.
2. Find and click on Settings option to change language.
3. Find the Book mark options to save links to website.
4. Find the option to clear history.

Dos and Don'ts

- Keep your web browser updated.
- Never click on popups that show on your web browser.

Learner's Observations

.....

.....

.....

.....

.....

.....

.....

.....

.....

.....

.....

.....



Notes

(Instructor's Signature)